

official matchday programme £2.00

sponsored by **HANSA HIRE**
LIMITED

vs Swindon Town

17th October 1998

kick-off 3.00pm



today's match sponsor

ClubCall



1

IPSWICH TOWN


A SERENADE TO THE NEW GREENE KING TRIUMPH ALE

(to the tune of "Singing the Blues")



Greene King beers are second to none
And now we've brewed another one
Oh, drinkers, you're gonna love this new beer!

This week we're launching Triumph Ale
And this new beer just cannot fail
Oh, drinkers, you're gonna love this new beer!

 A golden ale with lots of taste
Drink it slowly, not in haste
And when the Blues have won their game
Order Triumph Ale by name!

So if you want to try a stylish brand
Make sure it's Triumph in your hand
Oh, drinkers, you're gonna love this new beer!



Lyrics by: Marilyn Jackson



(Greene King Triumph Ale was launched recently. It has an abv of 4.3% and is brewed from a complex blend of four different hops. Triumph Ale is not available at Portman Road but will be found in an increasing number of pubs throughout the south, south-east and East Anglia).



Inside Today...

Saturday 17th October 1998

6-8The Spotlight is on: **Mick Stockwell**

Exclusive interview with Town's Players' Player of the Year

10-11That Was The Year That Was: **1993/94**

Town retained Premiership status on the season's final day, Take That were making records and, across the pond, Nigel Mansell was breaking records

18-19In the Frame

Great action from the recent victories over Palace and Tranmere

24-25Pull-out Poster

Jamie Clapham gets the full colour treatment

26-27Going for glory

A look at Ipswich Town Women's Football Club

33-36In Town Today: **Swindon Town**

Get the rundown on the Robins

45-47Stats and Facts

From the youth side to the first-team, every fact is at your fingertips



Ipswich TOWN

FOOTBALL CLUB

Portman Road, Ipswich IP1 2DA



HONOURS

Football League Div 1 Champions: 1961/62 Runners-up: 1980/81, 1981/82, Div 2 Champions: 1960/61, 1967/68, 1991/92 Div 3 (South) Champions: 1953/54, 1956/57 FA Cup Winners: 1978 UEFA Cup Winners: 1981 Texaco Cup Winners: 1973 FA Youth Cup Winners: 1973, 1975

Chairman: David Sheepshanks
Directors: Roger J. Finbow,
Philip W. Hope-Cobbold,
John Kerr MBE,
John S. Kerridge,
Richard J. Moore.

Vice Presidents:
Kenneth H. Brightwell,
Harold R. Smith

Secretary: David Rose

Director of Sales & Marketing:
Paul Clouting

Sales & Promotions Manager:
Mike Noye

Sales Development Manager:
Richard Powell

Retail Manager: Mick Brooks

Ticket Office Manager: Bill Leggate

PR Manager: Alesha Gooderham

General Catering Manager:
Tim Beanland

Catering Operations Manager:
Louise Usher

Safety Officer: Geoff Sheppard
Club Doctor: Steve Lazar
Head Groundsman/Stadium Manager:
Alan Ferguson
Kit Manager/Asst. Stadium Manager:
Trevor Kirton

TRAINING & COACHING STAFF

Manager: George Burley
Assistant Manager: Dale Roberts
First-Team Coach: Stewart Houston
Chief Scout: Colin Suggett
Scout: John Wark
Physiotherapist: Dave Williams
Community Football Development:
David Brooks

FOOTBALL ACADEMY

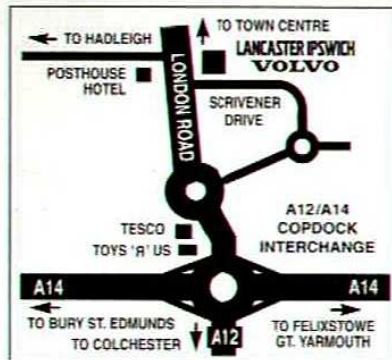
Director: Bryan Klug
Assistant Director (UI9s):
Paul Goddard
Assistant Director: Ken Goody
Education and Welfare Officer: John Allpress
Youth Co-ordinator: Simon Milton
Recruitment Officer: Malcolm Moore
Administrators: Helen Broughton and Gill Bigny

Telephone (01473) 400500
Fax (01473) 400040
Ticket Office (01473) 400555
Sales and Promotions
(01473) 400523
The Physio Centre/mobile
(01473) 400500/0850 219211
World Of Punch (01473) 400501
Centre Spot (01473) 400550
Community (01473) 400513
ITFC Catering Department
(01473) 400550
Clubcall 0891 12 10 68
Ticketline 0891 12 10 69
Calls cost 50p per minute at all times.
Clubcall, Avalon House, London EC2A 4PF

Main Club Sponsor
Greene King plc

MAGAZINE PRODUCTION Programme Controller: Mike Noye Editorial and Design: Final Score RSL, Fairview House, Blind Lane, Little Burstead, Billericay, Essex, CM12 9SN. Tel (01277) 632070 Fax (01277) 632080 E-mail: 101577.2411@compuserve.com
Contributors: Sarah Scarlett, Verena Wood, Paul Voller, Mike Bondy **Pictures:** Chris Sheldrake, Professional Sport, Action Images, Allsport.
Printing: Ancient House Press, Hadleigh Road Industrial Estate, Ipswich.

The views expressed in this publication are not necessarily those of Ipswich Town Football Club Limited. No part of the Matchday Programme may be reproduced without permission from the Club. ©1998



The stunning new turbocharged Volvo S40 T4 is George Burley's drive for the 1998/99 season, sponsored by Lancaster Ipswich. Come and see the S40/V40 for yourself. And come on you Blues.

LANCASTER IPSWICH

London Road Ipswich IP2 0ST. Tel: 01473 602502

A CAR YOU CAN BELIEVE IN
VOLVO

12 The Buttermarket Centre Ipswich
97 Foxhall Road
Ipswich
01473 - 216121
467 Main Road Dovercourt

PANASONIC



TELEVISIONS R/C FAST TEXT,
NICAM STEREO

PANASONIC



VIDEO RECORDERS

PANASONIC



MINI SYSTEMS

MATTHEWS
The Audio Visual Specialists

ClubCall

**IPSWICH
TOWN**



**Ipswich Town
Ticket Line**

**0891
121 069**

For the facts, not the fiction

**0891
121 068**

Calls charged at 50p per minute at all times



PROPERTY MANAGEMENT

Always letting more...

For all your property
rental requirements
call us now on

Freephone

0800 7834561



from the Manager

Good afternoon everybody and welcome back to Portman Road for this afternoon's home match with Swindon Town.

I'm sure that those of you who were here for our last home game against Crystal Palace were delighted, as I was, by the convincing manner of our victory over a team who, on paper at least, look to be one of the stronger sides in the First Division.

We are always confident of three points at home, but against a Palace side which had won its previous three matches we knew we'd have to play well to win it.

In the event, I felt we dominated the whole game and worked hard in the first-half to get the breakthrough, which eventually came right on half-time.

In the end it was mostly one way traffic, but the game lasts 90 minutes and you've got to keep working away until the end.

Palace tried to put us under a bit more pressure after the break, but Mauricio Taricco and Alex Mathie popped up with two classy finishes near the end to make it a convincing 3-0 win.

Of course, since

that match we have had a fortnight without a competitive game, although we did have a good run out in a Testimonial match for Colchester United's Tony Adcock in midweek.

At this stage of the season you want to play regular football, but that hasn't been the case because of international commitments. We missed out on last week's match at Queens Park Rangers, so the players are itching to get back into action this afternoon.

Last Friday I popped down to Upton Park to watch our two lads play for the England U21s against Bulgaria.

Both Richard Wright and Kieron Dyer did well while they were on the field, but it was

worrying to see Kieron limping off early in the second-half.

Kieron had been feeling a slight hamstring strain before the game and showed a lot of character to play on through a bit of pain.

He was very keen to play for his country, of course, but unfortunately he has done a bit of damage and looks certain to miss today's game, and possibly Tuesday night's visit of Norwich as well.

Sometimes you have to pull players out of training or match situations if they aren't feeling one hundred per cent, but that wasn't the situation with England.

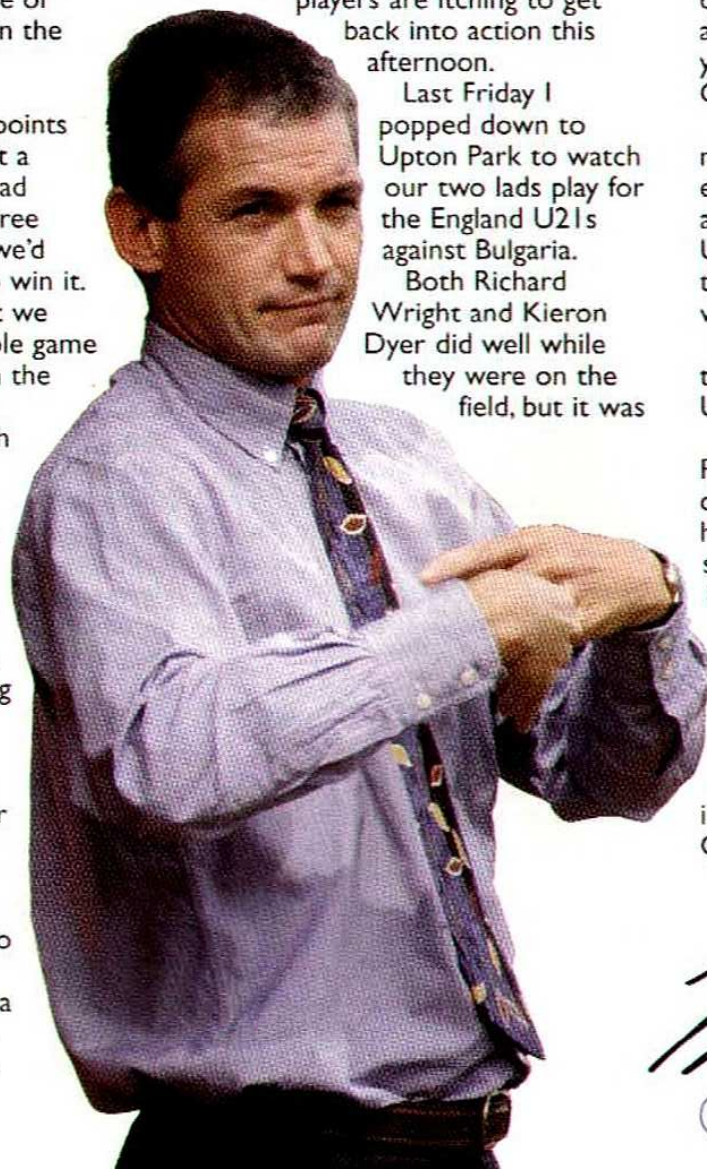
For his part, Richard Wright did everything he had to. I've always said Richard's the best young 'keeper in the country and Glenn Hoddle agrees with that.

At 20 Richard has now played more than 150 games for us, has experience in the Premiership and has won a number of England U21 caps. With his attitude and the attributes he's got, Richard will just keep on improving.

In addition, young Sean Friars turned out for Northern Ireland U21s and also did very well.

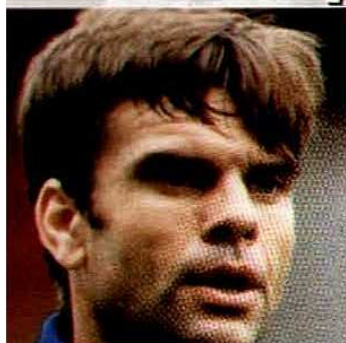
Since my last notes I've brought Paolo Vernazza in on loan. He's only 18, but Arsenal rate him very highly indeed and he adds to the strength of our squad. He's initially here for one month, although we'll look at extending that if he does well.

But back to today and Swindon. They had a great result beating Huddersfield 3-0 last Friday and will be out to impress their new manager, Jimmy Quinn. Enjoy the game.






The spotlight is on




Mick Stock

The recent game against Palace signalled Mick Stockwell's 450th League outing for Ipswich in his 17th season as a professional with the Club. But 'Stumper' continues to roll back the years, as his high octane performances keep on proving. The Matchday Programme caught up with Mick during a quiet moment last week...

MP: YOU CELEBRATED ANOTHER APPEARANCE MILESTONE AT THE PALACE GAME, HOW HAS THE GAME CHANGED DURING YOUR CAREER?


 The game's evolving all the time, and it's certainly a bit quicker now than it was when I first started. By how much it is difficult to say, but it is definitely played at a faster pace. I think players are generally fitter, and concentrate more on athletic preparation these days.

THE MONEY THAT HAS Poured IN AT THE TOP LEVEL MUST HAVE MADE A BIG DIFFERENCE TOO...

 Obviously, yes. More so in the Premiership, but the money side of things has really taken off. That's the market place at the moment. A lot of older pros have probably come out of the game in the last few years and now look at it and think 'I'd like a bit of that'. But I think that's always been the case,

although the jump has been more dramatic recently.


DO YOU THINK THAT THE PRESSURE HAS INCREASED AS A RESULT OF THAT?

 Well the media attention on the game is definitely higher. There is more scrutiny on everybody, and nowadays the top players have a profile more like a movie star. The big names have always been stars, but they never used to get the sort of attention they receive now. They are living their lives under a microscope. But Premiership football is very fashionable at the moment and everybody wants to be a part of it. The papers want their bit of it and so they do a lot of coverage - whether it's of the games or of the personalities. I think that's something that the modern young players need to be taught to deal with. It's a difficult area. You get your Michael Owens who seem to be able to handle it very well, but at the end of the day your average footballer is just



a young, working class bloke who has never encountered that sort of attention before. All footballers are normal people, but we can be put up on pedestals. We're going to make mistakes from time to time - like everybody does - and what matters is how you deal with it. To be fair, I don't think we have those sort of pressures at Ipswich at the moment, but we've got some very talented young players who could in time move on to one of the bigger, high pressure clubs and hopefully they will be able to handle the attention if that happens.

THE CLUB ITSELF MUST ALSO HAVE CHANGED SUBSTANTIALLY DURING YOUR TIME THERE...

 It's difficult to say, because I have probably changed along with it. But the training facilities and that sort of thing have certainly improved - any player coming in and training




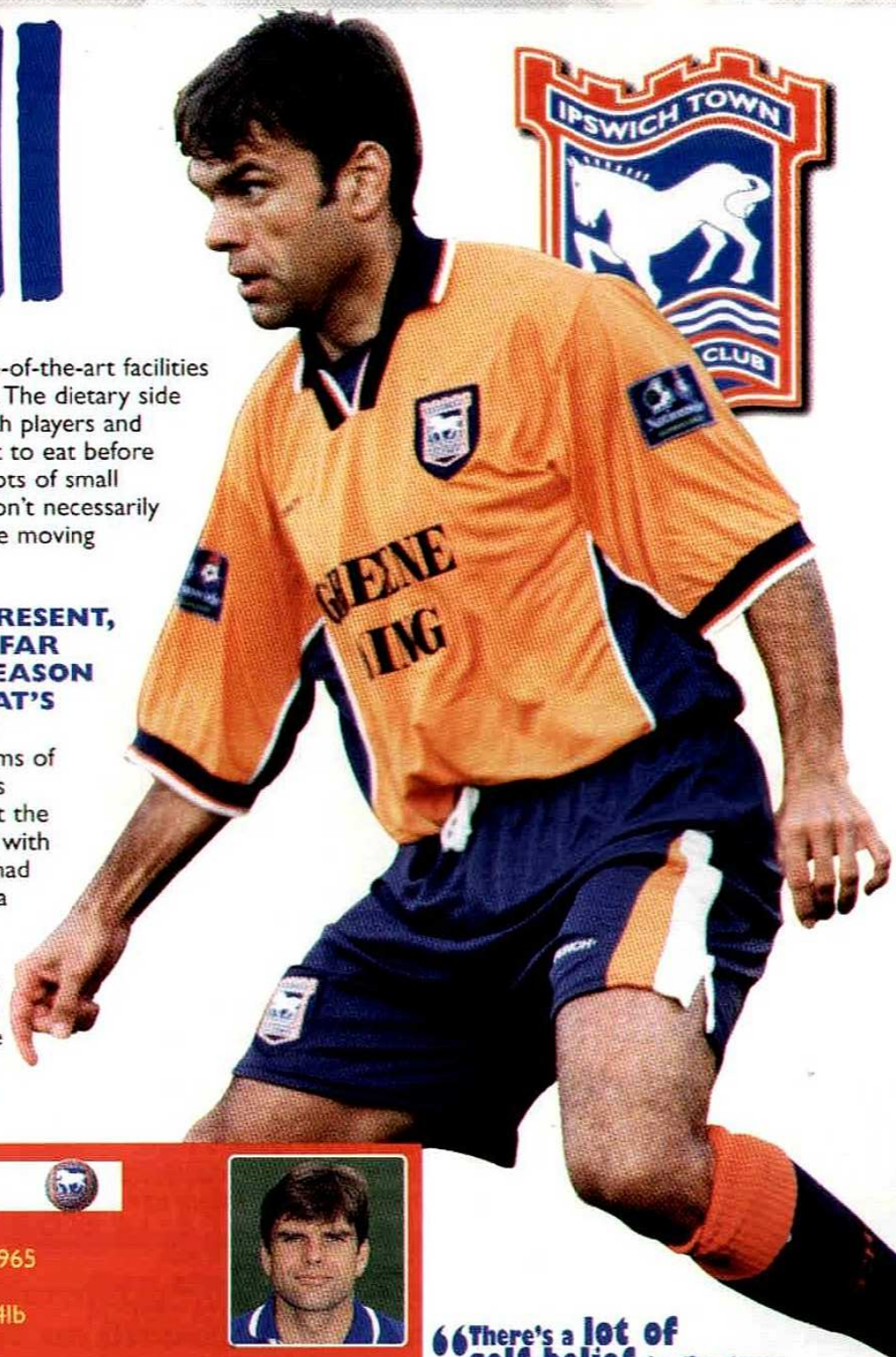
Stockwell



at Ipswich nowadays will use state-of-the-art facilities and equipment, which is excellent. The dietary side has also come on a great deal, with players and coaches a lot more aware of what to eat before games and that sort of thing. It's lots of small tinkering which go on, but you don't necessarily notice them at the time as you are moving along with it.

COMING BACK TO THE PRESENT, TOWN HAVE ENJOYED A FAR BETTER START TO THE SEASON THIS TIME AROUND. WHAT'S BEEN THE KEY TO THAT?

 Avoiding the injury problems of the last couple of years has played a big part. We're not the size of Club which can easily deal with a lot of injuries. Also, the run we had at the end of last season instilled a lot of confidence. So without being right back to the form that we know we can produce, we are still winning games and picking up points. Last season we'd play quite well but not get anything out of games - which has also happened



Stockwell Fact File



Place of Birth: Chelmsford
Date of Birth: 14th February 1965
Age: 33
Height: 5ft 9in **Weight:** 11st 4lb
Previous Club(s): None
Signed from: Apprentice
Honours: Div Two title 1992

(Figures correct at 15.10.98)

| Era | Club | League Games | Goals | Fee | Date Signed |
|-------------|---------|--------------|-------|------|-------------|
| 82/83-98/99 | Ipswich | 450 | 31 | none | 17.12.82 |

“There's a lot of self-belief in the team at the moment, and we are confident in what we can achieve.”





a couple of times this year - but this time we've managed to put a few wins together and we haven't lost many. Nobody has run away with the League so far, so we find ourselves in a nice little position and hopefully we can keep things ticking along.

HOW DO YOU RATE THE SIDE'S CHANCES?



I'm quietly confident. You never know what's around the corner, but you touch wood and hope there are no nasty injuries or whatever. There's certainly enough talent here - so long as we can keep the consistency throughout the season - to take us very close, if not straight up automatically. But we've got to keep aiming for the top two. There's a lot of self-belief in the team at the moment, and we are confident in what we can achieve. We don't go into games fearing anyone in our League, and that can only be a good thing. But confidence can be eroded quite quickly, so hopefully we can maintain our form, have a bit of luck and not pick up too many injuries. Then who knows what we can achieve?

It's not unrealistic to be looking for promotion - we're well capable of doing it."

ON A PERSONAL NOTE, IT SEEMS TO BE BUSINESS AS USUAL FOR YOU THIS SEASON. DOES IT GET HARDER AS THE YEARS GO BY?



As you get older you've got to draw on your experience. You get to know your own body better, and understand when you've got to train hard and when you have to ease off the gas a little bit. But I think the key is to still have the enthusiasm and enjoyment there.

LOYALTY APPEARS TO BE A THING OF THE PAST NOWADAYS. WHAT'S KEPT YOU AT IPSWICH ALL THIS TIME?



I think Ipswich is a good Club to be at. Obviously if circumstances had changed then it might have been different, but I've always been very happy at Ipswich and

nothing ever came along to tempt me off somewhere else. I've given everything I have to this Club, but to be fair they've been very loyal back as well. You never know, do you? Had I had the opportunity to play at a bigger Club and everything was right, then things could have worked out differently. But I don't regret a single moment of my time here. Ipswich has been a great Club to me.

LOOKING TO THE FUTURE, YOU'RE NOW ASSISTING IAN SMITH WITH COACHING THE ACADEMY U16 SIDE. DO YOU ENJOY THAT ASPECT OF FOOTBALL?



I've thoroughly enjoyed it so far, yes. The young lads are great, and they really



want to learn. They'd run through a brick wall if you asked them. They are all so keen to do well and it's nice to get on the other side and try to give some of the knowledge you've picked up over the years back to the youngsters. It's certainly a road I want to travel down when I eventually do stop playing. It's not something I'm worrying too much about at the moment, as I just want to keep playing as long as I can. But I've got to be realistic and start considering what the future holds. I'm in the middle of changing my FA Coaching Badge to the new UEFA system at the moment, so that is taking up a bit of time.

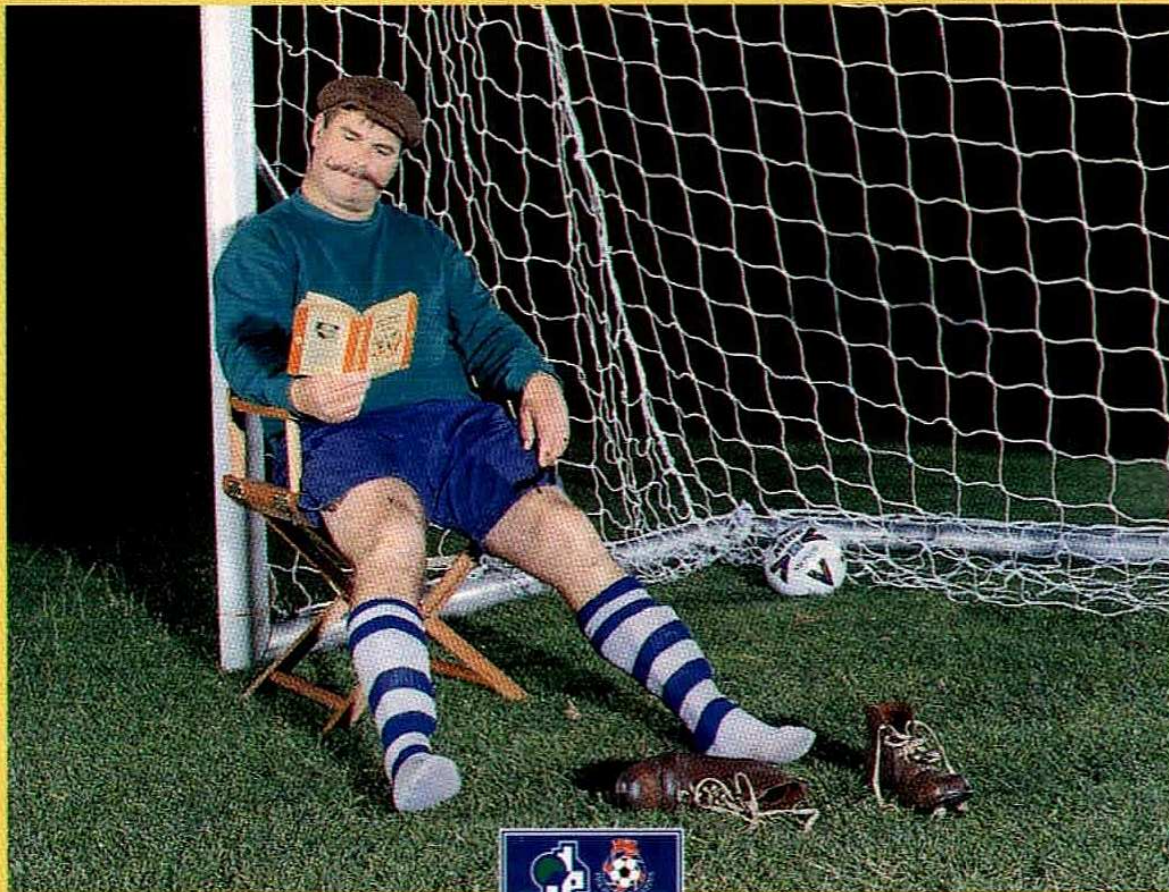
FINALLY, MICK, WHAT ARE YOUR HOPES AND AIMS FOR THE REST OF THE SEASON?



To stay injury free and to be able to go through the season enjoying my football. I've got every confidence that, fitness permitting, I can carry on doing a good job. Team-wise, it's not unrealistic to be looking for promotion - we're well capable of achieving that. You look at what we've done so far, and look at the other teams up there, and think that we must have a good chance.



Before your playing days come to an end...



...make sure you've talked to us about your pension plans.

It pays to decide...



**For more information pop into your local branch
or call us FREE on 0500 30 20 14 (quoting ref: LM34)**

Nationwide Building Society, Nationwide Life Limited and Nationwide Unit Trust Managers Limited represent only the Nationwide Marketing Group, which is regulated by the Personal Investment Authority for life assurance, pensions and unit trust products. Nationwide Unit Trust Managers Limited is also regulated by IMRO. Nationwide Life Limited is registered in England No. 2319634. Registered Office: Nationwide House, Pipers Way, Swindon, Wiltshire SN38 1NW. Customer Service Centre Telephone: 01793 482206.

www.nationwide.co.uk

The World's No.1 Building Society



That was the year that was...

1993-94

Manchester United mourned the loss of Sir Matt Busby, Steven Spielberg swept the Oscars with *Schindler's List* and *Take That* were hot news on the hit parade. Meanwhile, Ipswich Town were fighting for their lives in the FA Premier League...

The great escape

After a promising return to top flight action the previous season - Town had even topped the table for a short while - Mick McGiven was confident about his side's chances of consolidating their Premiership place in 1993/94.

Two former Everton players, Ian Marshall and Paul Mason, were signed during the summer to add to the Club's firepower following the loss of Jason Dozell and the retirement of Paul Goddard from first-team football.

The season got off to the perfect start, with three straight wins coming without a goal being conceded, and things looked bright for McGiven and Town.

But once August turned to September and the leaves started falling off the trees, the season went into a long and steady freefall for Ipswich.

There were bright moments, with a promising FA Cup run finally ending in a Fifth Round replay defeat by Wolves, but seven losses in nine games towards the end of the campaign seemed destined to spell disaster.

In the end, Sheffield United's dramatic last minute defeat at Chelsea - to a goal scored by Mark Stein, who was later to

enjoy a spell on loan at Portman Road - was enough to keep Ipswich up on the final afternoon.

The supporters, staff and players who made the long trip north to Blackburn to witness that final heart-stopping day were all agreed: things would only get better in 1994/95...or would they?

THE BIG MATCHES

8th May 1994

FA Premiership

Blackburn 0 Ipswich 0

A goalless draw isn't often 'crucial', but the point that Town picked up in this tense match was enough to guarantee another year of Premiership football at Portman Road.

Having conceded the League title to Man Utd the previous Monday there was an air of anticlimax for Blackburn's, but for Town the game remained vital.

Mick McGiven's side gave its best performance for months to stifle the twin threat of Alan Shearer and Jason Wilcox, and went close to winning, with good efforts from David Linighan, Mick Stockwell, Ian Marshall and Chris Kiwomya.

It wasn't a classic, but in the end it was enough.

The Headline Makers

MANSELL'S MOTORING

Britain's Nigel Mansell becomes only the third ever driver - after Emerson Fittipaldi and Mario Andretti - to claim both a Formula One and an IndyCar title.

FA COURT VENABLES

Despite being involved in courtroom battles over his dismissal from Spurs, Terry Venables is named as the new England coach in January 1994. "We must go back to basics," he says on his appointment. "I want to play good football, but not fantasy football."

FILM STARS

Setting the cash tills a-ringing during 1993/94 were...

JURASSIC PARK

Special effects galore as Sam Neill and Richard Attenborough get among the dinosaurs.

ALADDIN

Robin Williams steals the show as the voice of the genie in this enchanting Disney remake.

SCHINDLER'S LIST

Spielberg ditches the tricks to make this moving story about the Holocaust.

SLEEPLESS IN SEATTLE

Meg Ryan, Tom Hanks and the Empire State Building star in this sugary love story.



THE STAR MAN

IAN MARSHALL

Signed for £750,000 from Oldham in August 1993, Ian Marshall was the man who

Town hoped would help improve on their 16th place finish of 1992/93.

The tall, versatile Marshall was equal to the task.

In a struggling side he averaged a goal every other game and his return of 15 goals made him Town's leading scorer.

He began as a central defender at Everton, and signed professional at Goodison Park in March 1984, helping the club to their 1986/87 League title.

He switched to attack on joining Oldham in March 1988, and was part of the Latics team which enjoyed great runs in the Littlewoods and FA Cups, as well as top scoring in the 1990/91 Second Division title success.

He left Ipswich for Leicester in September 1996, having scored 32 goals in 84 League appearances for the Club.



THE BIG MATCHES

29th January 1994

FA Cup Fourth Round

Ipswich Town 3 Tottenham 0

John Wark rolled back the years with an outstanding display at the heart of Town's defence to line up a Fifth Round clash with Liverpool.

A tower of strength as Ipswich took a welcome break from League action, Wark's headers from set-pieces set up goals for Ian Marshall and Gavin Johnson and his control at the back meant that Craig Forrest hardly had a save to make all afternoon.

By the time Neil Thompson made it 3-0 five minutes from the end, Wark had done enough to knock the stuffing out of sorry Spurs, aided and abetted by excellent performances from Mick Stockwell and Bontcho Guentchev, in particular.

HOW THEY FINISHED

| Club | P | W | D | L | F | A | Pts |
|-------------|----|----|----|----|----|-----|-----|
| Man Utd | 42 | 27 | 11 | 4 | 80 | 38 | 92 |
| Blackburn | 42 | 25 | 9 | 8 | 63 | 36 | 84 |
| Newcastle | 42 | 23 | 8 | 11 | 82 | 41 | 77 |
| Arsenal | 42 | 18 | 17 | 7 | 53 | 28 | 71 |
| Leeds | 42 | 18 | 16 | 8 | 65 | 39 | 70 |
| Wimbledon | 42 | 18 | 11 | 13 | 56 | 53 | 65 |
| Sheff Wed | 42 | 16 | 16 | 10 | 76 | 54 | 64 |
| Liverpool | 42 | 17 | 9 | 16 | 59 | 55 | 60 |
| QPR | 42 | 16 | 12 | 14 | 62 | 61 | 60 |
| A.Villa | 42 | 15 | 12 | 15 | 46 | 50 | 57 |
| Coventry | 42 | 14 | 14 | 14 | 43 | 45 | 56 |
| Norwich | 42 | 12 | 17 | 13 | 65 | 61 | 53 |
| West Ham | 42 | 13 | 13 | 16 | 47 | 58 | 52 |
| Chelsea | 42 | 13 | 12 | 17 | 49 | 53 | 51 |
| Tottenham | 42 | 11 | 12 | 19 | 54 | 59 | 45 |
| Man City | 42 | 9 | 18 | 15 | 38 | 49 | 45 |
| Everton | 42 | 12 | 8 | 22 | 42 | 63 | 44 |
| Southampton | 42 | 12 | 7 | 23 | 49 | 66 | 43 |
| Ipswich | 42 | 9 | 16 | 17 | 35 | 58 | 43 |
| Sheff Utd | 42 | 8 | 18 | 16 | 42 | 60 | 42 |
| Oldham | 42 | 9 | 13 | 20 | 42 | 68 | 40 |
| Swindon | 42 | 5 | 15 | 22 | 47 | 100 | 30 |

In the cups

FA Cup: Fifth Round (lost to Wolves 2-1)

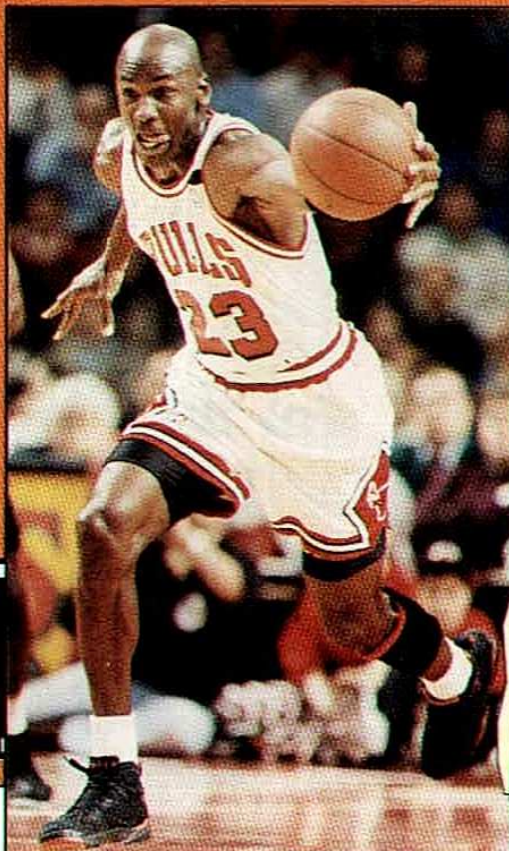
League Cup: Third Round (lost to Liverpool 3-2)

END OF THE LINE

Several high profile sporting figures pass away during the season, including Danny Blanchflower (pic left), Sir Matt Busby and the 'voice of cricket' Brian Johnston.

MIKE IN THE MONEY

According to Forbes magazine, basketball star Michael Jordan (right) is the highest paid sportsman in the world, with earnings of \$36m (£22m). There are no footballers in the list. Top Brit is boxer Lennox Lewis with a 'mere' \$15 (£10m).



MRS DOUBTFIRE

It's that man Robin Williams again, this time dressing up as a woman and winning rave reviews.

THE FUGITIVE

Harrison Ford and Tommy Lee Jones try to out-cool each other in this classic chase movie.

TOP OF THE CHARTS

Take That make their boyish presence felt...

1. Living On My Own...Freddie Mercury
2. Mr Vain.....Culture Beat
3. Boom! Shake The Room.....Jazzy Jeff and the Fresh Prince
4. Relight My Fire.....Take That featuring Lulu
5. I'd Do Anything For Love (But I Won't Do That).....Meat Loaf
6. Mr Blobby.....Mr Blobby
7. Babe.....Take That
8. Twist And Shout.....Chaka Demus and Pliers, featuring Jack Radics and Taxi Gang
9. Things Can Only Get Better.....D:Ream
10. Without You.....Mariah Carey
11. Doop.....Doop
12. Everything Changes.....Take That
13. The Most Beautiful Girl In The World.....Prince
14. The Real Thing.....Toni Di Bart
15. The Key The Secret.....Urban Cookie Collective
16. It Keeps Raining (Tears From My Eyes).....Bitty McLean
17. Go West.....The Pet Shop Boys
18. Don't Be A Stranger.....Dina Carroll
19. True Love.....Elton John and Kiki Dee
20. Right Here.....S.W.V.

Last Season
The Nationwide Football
League saw an Increase in
Attendance of 13.5%;
Why...?

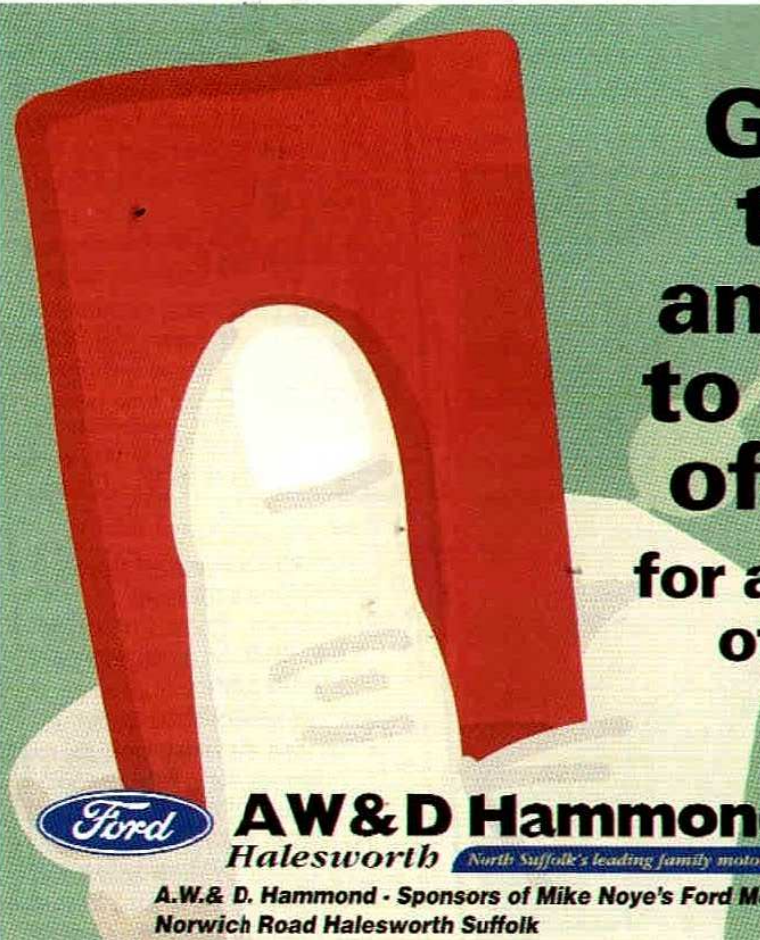


The authority...



The Quality of the Football

Images by Empix ©1998 040 444 Digital Artwork by SentryBox 01895 261 220



**Give the rest
the red card
and get down
to Hammonds
of Halesworth**
for a superb selection
of quality used cars



AW&D Hammond
Halesworth

North Suffolk's leading family motor group

A.W. & D. Hammond - Sponsors of Mike Noye's Ford Mondeo
Norwich Road Halesworth Suffolk

**Call 01986
834800**

Punch Lines

with Retail Manager Michael Brooks

New catalogue out soon

Whisper it quietly, but December 25th is only ten weeks away, so why not start planning to give that special Town fan in your life a Blue and White Christmas to remember?

The new World of Punch Autumn-Winter Catalogue will be available from our home game against West Bromwich Albion on Saturday 31st October and it is filled with a huge range of leisurewear, gift ideas and goodies galore to suit every budget.

To receive your **FREE** copy of this great catalogue, simply pop into one of our World of Punch stores or phone the mail order hotline on: (01473) 400501.

In good company

Don't forget that you can now kit your company's employees out in some exclusive Punch Corporate Wear courtesy of the World of Punch. We are launching a Corporate Wear brochure today which will feature a range of quality clothing suitable for business, corporate days and work wear.

Polo shirts, baseball caps and fleece jackets are just some of the great looking garments that are sure to be a big hit with companies and contribute to the continued success of the Club.

As an added bonus, our

extremely competitive prices mean that your company can look and feel good without needing to call in the accountants.

Our new Corporate Wear is sure to be big for business, so why not give the World of Punch a call on: (01473) 400501 to discuss your requirements.

New Benchwear now available

The home and away Performance jackets, from the Punch Benchwear range, are now available. Priced at £49.99 (Adults) or £39.99 (Juniors), the jackets are available in black and royal blue (home) or orange and navy (away).

GOLDEN GAMBLE



Make sure you are in with a chance of winning some serious cash prizes by getting a ticket from our striking Golden Gamble sellers.

Our most recent winner is:
v Crystal Palace £500
Mr E. Tyler, North Walsham



Team Punch goes from strength to strength

Team Punch Manager Jon Grayston is pictured (above left) with Town fans Matthew and Gerald Swann. Matthew (in full Punch kit) plays for Twydall F.C. in Kent, and all eight of Twydall's sides have seen sense and kitted their players out in Team Punch. Your side could join the growing list of satisfied customers wearing stylish and affordable Team Punch kits this season, so why not ring Jon Grayston on: (01473) 400501 to discuss your requirements.

Prettys Solicitors

Birketts

Willis Corroon

Royal & Sun Alliance

Waste Recycling Group plc

Needhams (Building Contractors)

GHB Roofing Ltd

Bank of Scotland

Premier CLUB



Jewson Ltd

Willis Corroon

Royal & Sun Alliance

Norfolk Line Ltd

AGF - Camat Ltd

Senate Electrical

Lombard North Central plc

Elliston Steady & Hawes (Building) Ltd

CH Freight Services Ltd

Chris and Viv Hunton



Ipswich Town Insurance Services



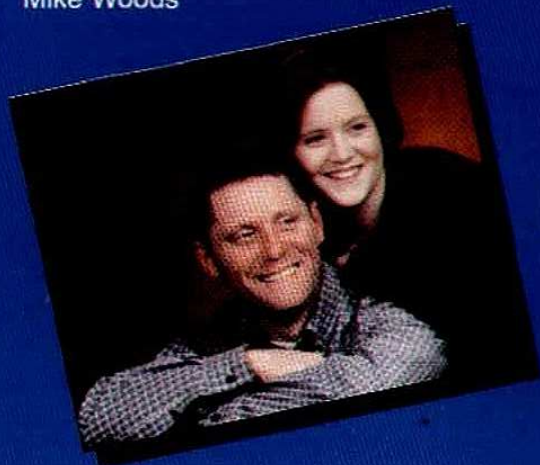
A Division of Direct Club Insurance Services Ltd

**THE LATEST GREAT OFFER TO BLUES
SUPPORTERS FROM THEIR CLUB!**

**MAKE A GREAT SAVE THIS SEASON
ON YOUR MOTOR AND HOUSEHOLD
INSURANCE ...**

"My girlfriend and I are buying our first house so money is tight. Your quote for buildings and contents saved us nearly £100. Very many thanks."

Mike Woods



"I phoned around for a quote and Ipswich Town were the cheapest by £75. They're simply the best - at everything!"

Howard Crowston



... they did

**WE INSURE YOU BENEFIT
FOR AN INSTANT QUOTE CALL NOW ON
0800 072 07 24**

Meals and deals

Ipswich Town's new General Catering Manager Tim Beanland has come a long way to get to Portman Road - and the 31-year-old has got big plans for the Club's catering operations.

Having begun his catering life in the United States, and also worked over in France, Tim arrived at Portman Road in September via Castle Howard, a stately home in North Yorkshire.

Along with Catering Operations Manager Louise Usher, Tim is overseeing a peaceful revolution at the Centre Spot on Portman Road, as long-term contractors Letheby and Christopher moved out last season and ITFC resumed control of the restaurant and its associated catering services.

He brings a wealth of experience to his new role. "I've been in the industry since I was 14, when my first job was washing up," explains Tim. "But working seriously, I finished college and then went to the United States about 12 years ago.

"My role is not so much the day-to-day running of the Centre Spot - that's mainly down to our Catering Operations Manager Louise Usher - but to see to the conferencing and banqueting facilities here at Portman Road, promote corporate entertaining and to generally boost the business and improve on what we already have.

"We are actively working on fun ideas, including themed evenings and some new exciting menus - we're just trying to encourage people to come and give us a visit. I'm sure they'll enjoy themselves."

Times have been hectic in the Catering Department over the last few months, what with Letheby and Christopher's departure after a long and successful partnership with Town, the subsequent re-fitting of the Centre Spot complex and the creation of the new Pioneer development. Tim is hopeful that the turmoil is now over, and that he and his team can start to concentrate more on the future.

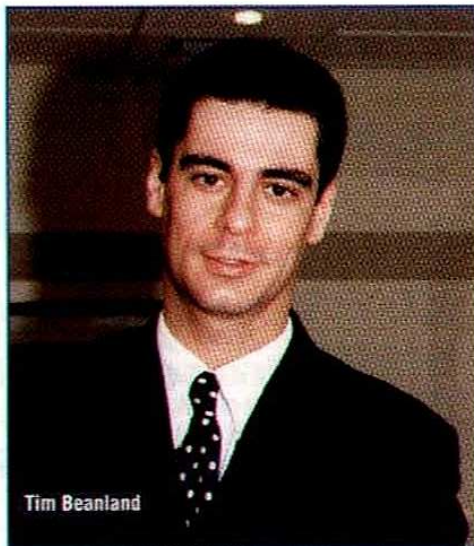
"The whole department has been ripped to bits with Letheby and Christopher leaving, and there's been a lot of other changes too, so the members of the department are all a bit up in the air. We are trying to let everything settle down a bit and get back to normal.

The Centre Spot restaurant and bar is open from 12.00 noon until 2.30pm during the week for drinks, bar snacks and top quality cuisine. There are also plans to open in the evenings. For further information about the Centre Spot - or any catering enquiry - please telephone the restaurant on: (01473) 400551.

"We hope to boost the lunch trade with new bar menus and a fun but comfortable atmosphere. We're going to take things upmarket a little and give the customers what they tell us they want.

"We're also looking at extending on the corporate and conferencing functions and at night we're eventually looking to do themed evenings and special occasions such as Valentine's Day and St. Patrick's Night - that sort of thing.

"There will be new drinks and menus and some great entertainment such as comedians, magicians, hypnotists and music. The future looks very exciting at the Centre Spot."



Tim Beanland

Free Meal at the Centre Spot

To take advantage of this great offer from the Centre Spot, simply call into the bar and pick up a card like the one pictured (right). Once you have enjoyed five delicious bar meals in a month - and had your card stamped - the next meal is free on ITFC. It's a mouth-watering prospect.



take five

Answers at bottom.

Take a break from the action and test your soccer knowledge with the Town quiz page.

Where are they now?

Listed below are the names of five former Town players and the clubs they now play for. Just match them up in the correct order.

a) Tony **Vaughan**



Colchester

b) Steve **Palmer**



QPR

c) Chris **Kiwomya**



Man City

d) Eddie **Youds**



Watford

e) David **Gregory**

Charlton

Two-Faced!

Talk about two-faced! Two of Town's stars have merged into one dynamic defender.



Can you unravel the identity of the mystery pair?

Find the FA Cup goalscorers

| | | | | | | | | | | | |
|---|---|---|---|---|---|---|---|---|---|---|---|
| M | U | R | L | E | W | R | I | G | H | T | T |
| A | N | E | L | K | A | I | E | I | W | C | Z |
| R | E | L | E | I | E | R | E | B | Y | O | N |
| T | C | T | L | B | D | S | E | H | G | U | H |
| I | H | A | C | E | L | S | R | U | D | G | E |
| N | I | U | N | S | R | A | M | R | E | V | O |
| I | R | E | E | T | O | I | E | H | L | O | R |
| S | S | R | W | A | O | P | D | E | B | F | N |
| R | T | S | T | A | N | N | E | E | O | T | E |
| M | H | G | O | E | E | H | A | R | O | N | U |
| L | J | E | N | T | E | I | G | L | E | U | N |
| O | S | B | O | R | N | E | B | A | N | E | T |

Hidden in the wordsearch are the names of 10 FA Cup Final goalscorers, including our own Wembley hero from back in 1978.

They can be found vertically, horizontally, diagonally or even backwards. Look out for Anelka, Cantona, Hirst, Hughes, Martin, Newton, Osborne, Overmars, Rideout and Wright

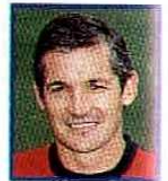
Can you spot them?

Badge-er!

Have we foxed you - or can you uncover the identity of this club badge?



How much do you know about... **GEORGE BURLEY?**



- George was born in 1946, 1956 or 1966?
- He made his senior debut for the club against Man United - was the game at Portman Road or Old Trafford?
- Did George play in the Ipswich side that won the FA Cup?
- Which other English club, apart from Town, has he managed?
- In which year did he take over as manager at Portman Road?
- And who did he replace in the role?
- Under George's management, Town have reached the Play-Offs on how many occasions?
- Did he make more than 20 appearances for Scotland at Full level?
- Name his nephew who scored in the 1998 World Cup finals
- Which of these clubs did George NOT play for - Sunderland, Torquay or Gillingham?



Answers Answers Answers Answers Answers Answers Answers Answers Answers Answers

| | | | | | | | | | |
|----|----|----|----|----|----|----|----|----|-----|
| 1 | 2 | 3 | 4 | 5 | 6 | 7 | 8 | 9 | 10 |
| 11 | 12 | 13 | 14 | 15 | 16 | 17 | 18 | 19 | 20 |
| 21 | 22 | 23 | 24 | 25 | 26 | 27 | 28 | 29 | 30 |
| 31 | 32 | 33 | 34 | 35 | 36 | 37 | 38 | 39 | 40 |
| 41 | 42 | 43 | 44 | 45 | 46 | 47 | 48 | 49 | 50 |
| 51 | 52 | 53 | 54 | 55 | 56 | 57 | 58 | 59 | 60 |
| 61 | 62 | 63 | 64 | 65 | 66 | 67 | 68 | 69 | 70 |
| 71 | 72 | 73 | 74 | 75 | 76 | 77 | 78 | 79 | 80 |
| 81 | 82 | 83 | 84 | 85 | 86 | 87 | 88 | 89 | 90 |
| 91 | 92 | 93 | 94 | 95 | 96 | 97 | 98 | 99 | 100 |

Where are they now:
 a) Tony Vaughan - Man City
 b) Steve Palmer - Watford
 c) Chris Kiwomya - QPR
 d) Eddie Youds - Charlton
 e) David Gregory - Colchester

George Burley:
 1. 1956, 2. Old Trafford,
 3. Yes, 4. Colchester,
 5. 1994, 6. John Lyall,
 7. Twice, 8. No, 11,
 9. Craig Burley,
 10. Torquay

Badge-er! Bristol City.
 Two-Faced:
 Mark Venus and Tony Mowbray.

Answers
 Answers
 Answers
 Answers
 Answers



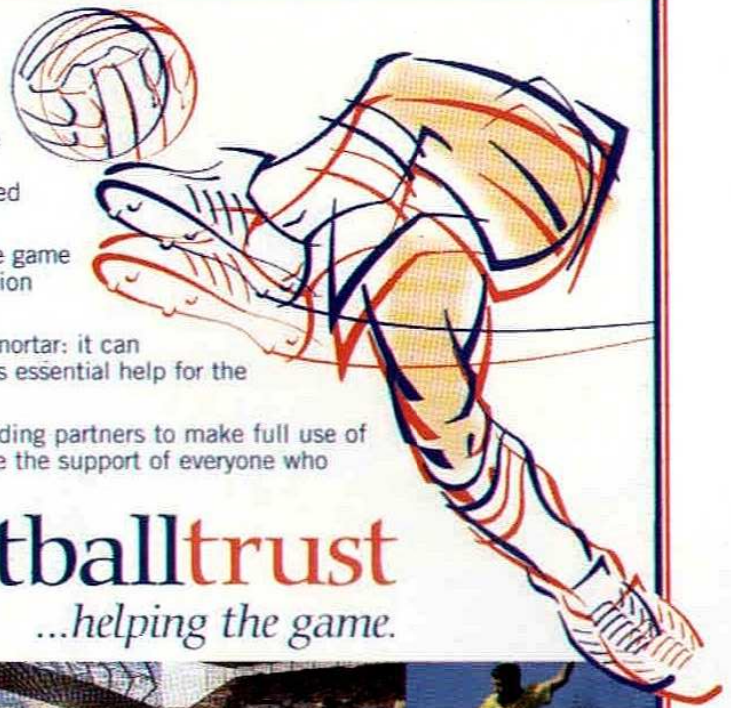
The Football Trust has been providing support for football throughout the UK for 22 years.

A major new funding package made up of annual contributions from The F.A. Premier League, The Football Association, The English Sports Council, The Football League and The Professional Footballers Association has been added to the Trust's pools derived income to secure its future.

The Trust has a major part to play in the success of the game and will continue its vital grant support for lower division clubs to complete the Taylor programme.

The Trust is about a great deal more than bricks and mortar: it can handle grant aid programmes of every sort and provides essential help for the game at all levels.

The commitment of the Government and the new funding partners to make full use of the Trust's grant aid experience and expertise will have the support of everyone who cares about the future of our national game.



the football trust
...helping the game.



The Football Trust, Walkden House, 10 Melton Street, London NW1 2EB

BE THERE!

*It's action packed ... It's home or away ...
It's football in your front room!*

BBC RADIO SUFFOLK

103.9, 104.6 & 95.5 FM

FIRST FOR IPSWICH TOWN

CHIMNEYS
Restaurant



Hall Street • Long Melford • Suffolk • CO10 9JR
Tel: 01787 379806 • Fax: 01787 312294

Charming 16th Century
Award-winning restaurant
renowned for its fine wines
and excellent food

An à la carte luncheon and
dinner menu served
Monday to Saturday

**THE PERFECT VENUE
FOR ENTERTAINING**

Mauricio Taricco caps a 60 yard run by blasting the ball into the Palace net to make it 2-0



Alex Mathie and Mauricio celebrate



**Action from
Town's recent
League wins
away at
Tranmere and
home against
Crystal Palace**



David Johnson outpaces
Palace defender Sagi Burton



Bobby Petta skips over this challenge from Craig Foster

Alex Mathie evades the attentions of Paul Warhurst to score goal number three v Palace



David Johnson shoots for goal



Kieron Dyer takes on the Rovers defence



James Scowcroft rises to the challenge



In the Frame

main pic: Matt Holland gets a header on goal

pics: Tranmere: Professional Sport; Crystal Palace: Chris Sheildrake

••• carl a r h u m p h r e y •••

MOBILE COMMUNICATION SPECIALISTS
TO CORPORATE & FLEET CUSTOMERS
THROUGHOUT EAST ANGLIA

CALL **01379-870666** - 7 DAYS A WEEK

SUPPLIERS TO



Ipswich Town
Football Club

Official Sponsors of the Ipswich Town Under-19s Academy side.

We offer a wide selection of Hams, Sausages, Cheese and Dairy Products as well as a full selection of Gourmet foods.

Excellent food from Essex

Broad Oak Farm Sausage Company

Cage End,
Hatfield Broad Oak

Tel: 01279 718316
Fax: 01279 718681

Lucozade SPORT **get ahead of the game**



New name - same winning team

On January 1st 1998, the new name for BMW in Ipswich was launched - Cooper BMW.

But with the same impeccable quality of BMW customer service from the same first class team of BMW professionals, owning a BMW car from Suffolk's leading BMW dealership is still just as rewarding as it has always been.

In fact, with a major programme of investment under way to drive the Cooper Dealership into the next millennium, Cooper of Ipswich customers have every reason to celebrate.

So join in a toast to the new name for BMW in Ipswich - Cooper BMW.

Cooper 
BMW in Ipswich

West End Road, Ipswich, Suffolk, IP1 2DZ
Tel: 01473 212456 Fax: 01473 232153

Fan Fare stats

Supporters' Stats from Paul Voller

Home Match Breakdown

v Luton Town (wc) 15.09.98

| TIME | GOAL ATTEMPTS ALL | | GOOD | | GOALS | | CORNERS WON | | FOULS COMMITTED | | OFFSIDE | | DISCIPLINE BOOK/OFFS | | SUBS USED | | |
|--------------|-------------------|-----------|-----------|----------|----------|----------|-------------|----------|-----------------|-----------|----------|----------|----------------------|-----------|-----------|----------|----------|
| | ITFC | LTFC | ITFC | LTFC | ITFC | LTFC | ITFC | LTFC | ITFC | LTFC | ITFC | LTFC | ITFC | LTFC | ITFC | LTFC | |
| 00-15 | 1 | 2 | 0 | 1 | 0 | 0 | 0 | 1 | 2 | 2 | 3 | 0 | 0 | 0 | 0 | 0 | 0 |
| 16-30 | 2 | 4 | 2 | 1 | 0 | 0 | 0 | 1 | 1 | 2 | 1 | 0 | 0 | 0 | 0 | 0 | 0 |
| 31-45 | 3 | 3 | 2 | 1 | 0 | 0 | 1 | 0 | 1 | 1 | 1 | 0 | 0 | 0 | 0 | 0 | 0 |
| 46-60 | 3 | 4 | 2 | 4 | 1 | 1 | 0 | 0 | 0 | 1 | 1 | 1 | 0 | 0 | 0 | 0 | 0 |
| 61-75 | 4 | 3 | 2 | 1 | 0 | 0 | 2 | 2 | 2 | 4 | 1 | 0 | 0 | 0 | 0 | 1 | 0 |
| 76-90 | 2 | 3 | 2 | 1 | 1 | 0 | 1 | 1 | 1 | 2 | 2 | 0 | 0 | B | 0 | 2 | 0 |
| TOTAL | 15 | 19 | 10 | 9 | 2 | 1 | 4 | 5 | 7 | 12 | 9 | 1 | 0 | 1B | 1 | 2 | 0 |

v Bristol City (lsc) 19.09.98

| TIME | GOAL ATTEMPTS ALL | | GOOD | | GOALS | | CORNERS WON | | FOULS COMMITTED | | OFFSIDE | | DISCIPLINE BOOK/OFFS | | SUBS USED | | |
|--------------|-------------------|-----------|-----------|----------|----------|----------|-------------|----------|-----------------|-----------|----------|----------|----------------------|-----------|-----------|----------|----------|
| | ITFC | BCFC | ITFC | BCFC | ITFC | BCFC | ITFC | BCFC | ITFC | BCFC | ITFC | BCFC | ITFC | BCFC | ITFC | BCFC | |
| 00-15 | 2 | 2 | 2 | 1 | 1 | 0 | 4 | 0 | 1 | 1 | 0 | 1 | 0 | 0 | 0 | 0 | 0 |
| 16-30 | 4 | 1 | 2 | 1 | 0 | 0 | 1 | 2 | 3 | 2 | 0 | 1 | 0 | 0 | 0 | 0 | 0 |
| 31-45 | 4 | 2 | 4 | 1 | 1 | 0 | 1 | 1 | 3 | 3 | 0 | 0 | 0 | B | 0 | 0 | 1 |
| 46-60 | 4 | 1 | 2 | 1 | 0 | 0 | 1 | 1 | 3 | 3 | 1 | 0 | B | 0 | 0 | 0 | 1 |
| 61-75 | 3 | 3 | 2 | 2 | 0 | 0 | 1 | 3 | 1 | 1 | 1 | 0 | B | 0 | 1 | 1 | 1 |
| 76-90 | 3 | 1 | 1 | 1 | 1 | 1 | 1 | 0 | 1 | 0 | 3 | 0 | 0 | B | 1 | 0 | 0 |
| TOTAL | 20 | 10 | 13 | 7 | 3 | 1 | 9 | 7 | 12 | 10 | 5 | 2 | 2B | 2B | 2 | 3 | 0 |

v Crystal Palace (lsc) 03.10.98

| TIME | GOAL ATTEMPTS ALL | | GOOD | | GOALS | | CORNERS WON | | FOULS COMMITTED | | OFFSIDE | | DISCIPLINE BOOK/OFFS | | SUBS USED | |
|--------------|-------------------|----------|-----------|----------|----------|----------|-------------|----------|-----------------|-----------|----------|----------|----------------------|-----------|-----------|----------|
| | ITFC | CPFC | ITFC | CPFC | ITFC | CPFC | ITFC | CPFC | ITFC | CPFC | ITFC | CPFC | ITFC | CPFC | ITFC | CPFC |
| 00-15 | 3 | 0 | 0 | 0 | 0 | 0 | 3 | 1 | 1 | 3 | 1 | 0 | 0 | 2B | 0 | 0 |
| 16-30 | 2 | 1 | 1 | 0 | 0 | 0 | 0 | 0 | 0 | 3 | 0 | 0 | B | B | 0 | 0 |
| 31-45 | 4 | 0 | 3 | 0 | 1 | 0 | 2 | 1 | 2 | 2 | 1 | 1 | 2B | 0 | 0 | 0 |
| 46-60 | 1 | 0 | 1 | 0 | 0 | 0 | 2 | 0 | 3 | 3 | 0 | 0 | 0 | 2B | 0 | 0 |
| 61-75 | 1 | 1 | 1 | 0 | 0 | 0 | 3 | 1 | 1 | 3 | 0 | 0 | 0 | 0 | 0 | 2 |
| 76-90 | 4 | 1 | 4 | 1 | 2 | 0 | 2 | 2 | 4 | 1 | 0 | 2 | 0 | 0 | 2 | 0 |
| TOTAL | 15 | 3 | 10 | 1 | 3 | 0 | 12 | 5 | 11 | 15 | 2 | 3 | 3B | 5B | 2 | 2 |

Throughout the season, members of the ITFC Supporters' Club are supplying a regular statistical run-down of Town's campaign.

The Statistics give a detailed breakdown of every attacking move carried out by Town during recent home matches, plus a look at which 'end' has enjoyed the most goals so far. It makes fascinating reading...

Portman Road Goal attempt analysis

| MATCH | GOALS SCORED | | ITFC | | Opp | |
|-------------------|--------------|----|------|----|-----|----|
| | CS | NS | CS | NS | CS | NS |
| Bury (L) | 0 | 0 | 0 | 0 | 0 | 0 |
| Exeter City (wc) | 3 | 2 | 0 | 0 | 1 | 1 |
| Sunderland (L) | 0 | 0 | 0 | 0 | 2 | 2 |
| Bradford City (L) | 1 | 2 | 0 | 0 | 0 | 0 |
| Luton Town (wc) | 0 | 2 | 1 | 0 | 0 | 0 |
| Bristol City (L) | 2 | 1 | 1 | 0 | 0 | 0 |
| C.Palace (L) | 1 | 2 | 0 | 0 | 0 | 0 |

SAVED/BLOCKED/WOODWORK

| MATCH | SAVED/BLOCKED/WOODWORK | | ITFC | | Opp | |
|-------------------|------------------------|----|------|----|-----|----|
| | CS | NS | CS | NS | CS | NS |
| Bury (L) | 2 | 2 | 1 | 0 | 0 | 0 |
| Exeter City (wc) | 5 | 5 | 1 | 2 | 2 | 2 |
| Sunderland (L) | 3 | 2 | 2 | 1 | 0 | 0 |
| Bradford City (L) | 5 | 2 | 1 | 2 | 0 | 0 |
| Luton Town (wc) | 4 | 4 | 4 | 3 | 0 | 0 |
| Bristol City (L) | 6 | 4 | 3 | 3 | 0 | 0 |
| C.Palace (L) | 4 | 4 | 1 | 1 | 0 | 0 |

OFF TARGET

| MATCH | OFF TARGET | | ITFC | | Opp | |
|-------------------|------------|----|------|----|-----|----|
| | CS | NS | CS | NS | CS | NS |
| Bury (L) | 7 | 9 | 0 | 3 | 0 | 0 |
| Exeter City (wc) | 2 | 2 | 1 | 0 | 0 | 0 |
| Sunderland (L) | 3 | 4 | 3 | 5 | 0 | 0 |
| Bradford City (L) | 3 | 3 | 3 | 2 | 0 | 0 |
| Luton Town (wc) | 2 | 3 | 5 | 6 | 0 | 0 |
| Bristol City (L) | 2 | 5 | 1 | 2 | 0 | 0 |
| C.Palace (L) | 4 | 0 | 1 | 0 | 0 | 0 |

CS churchmans NS North Stand

all figures correct upto and including October 3rd

How the Goals have been scored so far

| PLAYER | METHOD | | | PLACE | | | SOURCE | | | | | | HALF | | | TOTAL | |
|-----------|--------|------|------|-------|-----|------|--------|--------|-------|------|-------|-------|-------|-----|-----|-------|-----|
| | RIGHT | LEFT | HEAD | OUT | PEN | GOAL | OPEN | CORNER | THROW | FREE | CROSS | INDIV | ERROR | 1ST | 2ND | | EXT |
| HOLLAND | 1 | 0 | 2 | 0 | 2 | 1 | 1 | 0 | 0 | 1 | 1 | 0 | 0 | 2 | 1 | 0 | 3 |
| TARICDD | 2 | 0 | 0 | 1 | 1 | 0 | 0 | 0 | 0 | 0 | 0 | 2 | 0 | 1 | 1 | 0 | 2 |
| STOCKWELL | 0 | 0 | 1 | 0 | 1 | 0 | 0 | 0 | 0 | 0 | 1 | 0 | 0 | 1 | 0 | 0 | 1 |
| MATHIE | 1 | 1 | 0 | 1 | 1 | 0 | 2 | 0 | 0 | 0 | 0 | 0 | 0 | 0 | 2 | 0 | 2 |
| MASON | 1 | 0 | 0 | 0 | 1 | 0 | 1 | 0 | 0 | 0 | 0 | 0 | 0 | 0 | 1 | 0 | 1 |
| SCOWCROFT | 3 | 1 | 3 | 1 | 4 | 2 | 3 | 1 | 0 | 0 | 3 | 0 | 0 | 4 | 3 | 0 | 7 |
| JOHNSON | 0 | 2 | 4 | 0 | 4 | 2 | 2 | 1 | 0 | 0 | 2 | 1 | 0 | 3 | 3 | 0 | 6 |
| VENUS | 0 | 1 | 1 | 0 | 2 | 0 | 0 | 1 | 0 | 1 | 0 | 0 | 0 | 1 | 1 | 0 | 2 |
| DYER | 1 | 0 | 0 | 0 | 1 | 0 | 1 | 0 | 0 | 0 | 0 | 0 | 0 | 0 | 1 | 0 | 1 |
| THETIS | 1 | 0 | 0 | 0 | 1 | 0 | 0 | 0 | 1 | 0 | 0 | 0 | 0 | 0 | 1 | 0 | 1 |
| OWN GOALS | 0 | 0 | 1 | 0 | 1 | 0 | 0 | 0 | 0 | 0 | 1 | 0 | 0 | 0 | 0 | 1 | 1 |

KEY: OUT - OUTSIDE AREA, PEN - IN PENALTY AREA, GOAL - IN SIX YARD AREA, OPEN - IN OPEN PLAY, FREE - FREE-KICK, INDIV - INDIVIDUAL EFFORT, ERROR - DEFENSIVE MISTAKE. FIGURES IN THIS TABLE UP TO AND INCLUDING v C.PALACE ON 03.10.98

Community Centre

The Football in the Community team is: David Brooks, Bridget Gooding, Sandra Lucas and Sean Thacker

Academy News 

Festivals of Football

Saturday mornings are busy again, with the addition of Festivals of Football.

Over the last two Saturdays the established Centres at Bury St. Edmunds, Bottisham and Ipswich have been entertaining the crowds at Cranes Sports Centre. This morning U8s from Ipswich and Stowmarket have been strutting their stuff.



Bury St. Edmunds Advanced Coaching Centre - U11s

Due to the number of new Centres, Festivals are now being held on non-matchday Saturdays in order to allow as many participants as possible to play fun games. If you have a free Saturday morning why not attend and watch the kids show off all they have learned through the season.

Another Festival of Football occurred back in the summer, when in Stanton, near Bury, a six-a-side tournament was staged, partly organised by Town's Community Coach Anthony Bray. Ipswich and Bury Centres were invited to enter teams at U9 and U11.

In the older age group, Trevor Cox's Bury Centre defeated Ipswich in the Semi-Finals on their way to winning the tournament.

In the U9s, the Ipswich Centre got through to the Semi-Finals without conceding a goal until a heart-breaking penalty shoot-out when Bury St. Edmunds Primary School, led by the outstanding Brendan Payne who is now in the Bury Centre, triumphed before going on to win the tournament.

Saturday Soccer Club

We have a full attendance at the Saturday Soccer Club again this week and we hope that you are all enjoying your day out at Portman Road.

The last Club fixture, against Crystal Palace, proved to be a cracking game with some pretty spectacular goals into the bargain - fingers crossed the same is on the menu today.

Sing up...Burley's Barmy Army!



The winners: St. Edmunds R.C. Primary School, Bury St. Edmunds

Soccer Fun

The half-term holidays beckon and we are again staging some of the ever popular two-day soccer courses, if you haven't already booked a place ring Bridget on: (01473) 400513 for an application form.

26/27 October

10.00am-2.00pm Bent Lane Training Ground, Rushmere
10.00am-2.00pm County Upper School, Bury St. Edmunds

29/30 October

10.00am-2.00pm Bent Lane Training Ground, Rushmere
10.00am-2.00pm Thurston Recreation Ground

COST £16.00 PER CHILD (£15.00 Blues Crew members) per two-day course.





Academy News with Simon Milton

Youth Co-Ordinator Simon Milton presents his regular update of events at the FA Academy here at Portman Road. Today he puts young midfielder Adam Miller in the spotlight and also brings news of some exciting developments at Town...

Musing with Miller

During the week I managed to catch up with Academy boy Adam Miller for a quick chat about his life and times at Ipswich Town. Here's what he told me...

Personal Details

Age: 16 (DoB: 19.02.82)

Lives: In Colchester

Family: Mum Angela and Dad Keith, and an 18-year-old brother called Ian, who plays for Heybridge Swifts who are a decent non-League side.

College Course: A Sports and Recreation Course, which includes one day a week gaining practical experience at the Colchester Leisureworld.

Talking Town

Position: Adam is a midfield player for the Academy U19s.

Favourite Current Town

Player: No prizes here - Kieron Dyer. *I'm convinced it's just because Kieron has got a little Merc and the boys are all impressed with it!*

Honours: He's represented Northern Ireland Youth at U16 and U18 level, playing against England at Lilleshall and also in the Milk Cup Tournament, which included a Northern Ireland team as well as sides from West Ham, Feyenoord and Brondby.

First Joined: Adam has been involved with Town since the age of 12, when he first got involved with the School of Excellence. His first coach here was 'uncle' Ken Goody.

Ambitions for 1998/99: To play in the Reserves.

Adam's a regular in the U19 Academy team and is keen to make the step up.

He would also like to represent Northern Ireland again.

Long-term Ambitions: To earn his first Ipswich Town contract.

Pre-Match Meal: Chicken and rice.

Out of Town

Team Supported as a Boy: He grew up in Kilburn in North West London, which probably explains the Irish connection, and followed QPR as a lad.

Hobbies: Snooker and golf, although he has no handicap... apart from his swing.

Favourite Music: Soul, swing, and opera... apparently.

Favourite Film seen recently: Face: Off with John Travolta and Nicholas Cage.

Favourite Players: The England captain Alan Shearer.



Today's Mascots

Name: Simon Smith

Age: 9

From: Long Melford, Sudbury

School: Upland Middle

Fave Player: David Johnson

Hobbies: Football, swimming, cubs



Name: Daniel Shelcott

Age: 15

From: Waldringfield

School: Kesgrave High

Fave Player: Matt Holland

Hobbies: Football, cricket



Sponsored by



Well done, Erdum

I'd just like to wish the best of luck to one of our Academy U16s, Erdum Artun, who has recently been away for trials with the England U16 squad. Erdum is a schoolboy from Chelmsford, and is a defender who played quite a few games for the Youth team last season and has been figuring for the Academy U19s this year. He was at Lilleshall with England last weekend and should find out if he has made the squad any time now.



Half-term plans

We're now making plans for the first half-term holiday period, which is coming up at the end of October. During that week there is an U10 and U11 Academy Premier League tournament at Kimbolton in Cambridgeshire. There are six teams involved in the tournament: Tottenham, Arsenal, Norwich, Peterborough, Coventry and ourselves. It looks like being a busy week, as we will also have a lot of youngsters in having trial games and training games. **They'll be everywhere!**

Jamie Clapham



Going for glory

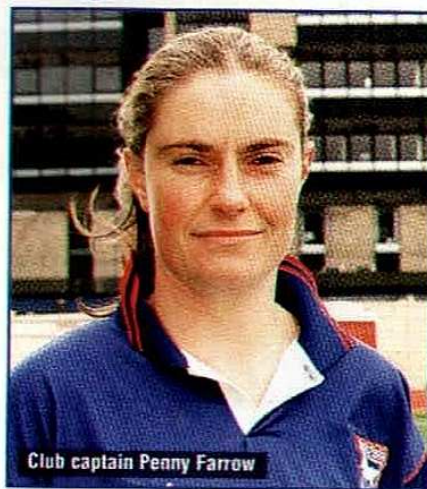
During last season your Matchday Programme introduced you to the players and staff at the Ipswich Town Women's Football Club. During 1998/99 we will continue to bring you regular updates of Ipswich's 'other' leading senior side.

The current season is an important one for Ipswich Town Women's Football Club as they strive to develop their young players and make a real push towards the Women's National Premier League.

Liverpool in the League Cup presented a similar task to that which George Burley might face taking Town to Anfield," explains manager Derek Tarbard. "We knew we had to be at our very best to get a good result."

The Women's first League match of the season ended in a disappointing defeat away to Leyton Orient, with the Blues shocked to find themselves 3-0 down in the first half-an-hour. However, a spirited fight-back saw them draw back to 3-2, thanks to two goals from new signing Lisa Culley, before a near miss from Nyssa Willis in the final minute ended hopes of a memorable draw.

Coach Tarbard added: "We have lost a few experienced players this season through injury, retirement and moves down to



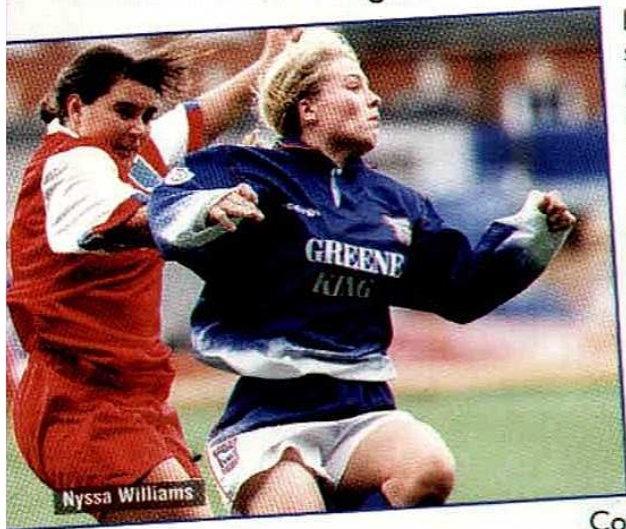
Club captain Penny Farrow

regional football. However, thanks to the excellent youth policy adopted by the club in recent years I have been able to call on some young girls who have already shown themselves to be fantastic prospects for the future.

"For example, 16-year-old Nyssa Willis and Laura Green, 15, have already shown that they can compete at the highest level in women's football."

As well as plucking some exciting young prospects from the youth ranks - a policy the women's club shares with the men's - Tarbard also strengthened his squad during the summer with the signing of two Southwold players - Polly Webb, 18, and 24-year-old striker Lisa Culley.

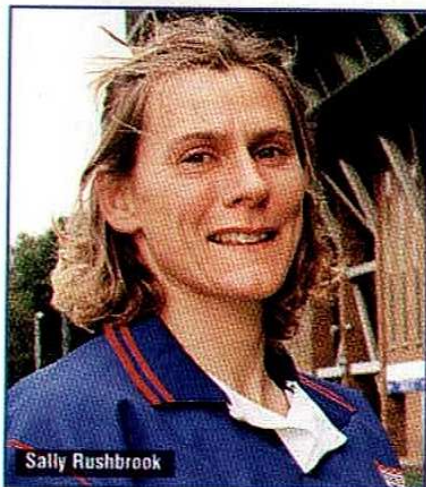
In addition to all the youngsters, Ipswich Town Women's team also benefit from having two vastly experienced players to call upon. Goalkeeper Sarah Howard and defender Sally Rushbrook are the Mick Stockwells of their side, having both shown great loyalty to the club over the years. The pair have been with ITWFC since its formation in 1985 and are still going strong today.



Nyssa Willis

Ipswich are proud of the fact that they are the only team from East Anglia to have reached the National League Southern Division and the club is only one step away from the top prize of a place in the Premier League, where they would face the might of Arsenal, Everton, Liverpool and arguably the best-known team in the women's game, the famous Doncaster Belles.

Ipswich got an opportunity to test their mettle for the higher level when they faced Liverpool Ladies in a tough League Cup First Round tie on Merseyside recently. "Our away draw against



Sally Rushbrook



Back row (left to right): Derek Tarbard (manager), Sarah Howard, Penny Farrow (captain), Pearl Gibson, Vanessa Smith, Steph Lloyd, Polly Webb, Emma Tarbard, Brian Lennie (coach).
Front row: Holly Williams, Sally Rushbrook, Lyndsey Dennington, Del Keeble, Laura Green, Nyssa Willis.

Still growing

Ipswich Town Women now play all their home matches at Crane Sports Ground in Playford Road, Ipswich - now part of the Ipswich Town Soccer Academy - with kick-offs at 2.00pm.



Until those pitches were ready the first-team had the privilege of playing at Portman Road on the practice pitch.

Team manager Derek Tarbard said: "The general interest in women's football continues to grow and grow.

"There are now 21,000 female players registered with the FA and, with the Women's World Cup being held in 1999, we expect even more women to take up the sport.

"We are always happy to add players to our club and would welcome any female Town fans interested in having a go at playing football.

"We are all amateurs, but we do take our football seriously and expect our players to be 100 per cent dedicated to the sport. Our training is hard, our determination to win is strong and we expect a professional approach to everything we do."

In Reserve

Ipswich Town Women's Reserves have joined the newly formed National Premier Reserve League and face a very difficult fixture list which includes double cup winners Arsenal Ladies Reserves.

Like the first-team - and indeed their male counterparts - the second string has a very young squad and in their first match, against Berkhamsted Town Ladies, they notched a creditable 3-2 victory - with Town's oldest player being just 19.

Ipswich Women's third team, which plays in Division One of the Eastern Region League, has an even younger squad and develops players emerging from the Under-12s and Under-14s.

David Williams, Chairman of the Ipswich Town Women's Club, said: "Running a club with five separate teams is a very large and expensive undertaking. Fortunately we have excellent support from Greene King and British Sugar in terms of kit provision and also receive help from a variety of local companies.

"We also have a good working relationship with Ipswich Town Football Club and benefit greatly from playing on the first-class pitches prepared by Alan Ferguson and his colleagues at Portman Road."

Anyone interested in finding out more about ITWFC should ring Club Secretary Sarah Howard on: (01473) 729281.

Lookin' Good

Check out the new Punch Corporate Wear brochure due out today for a whole range of clothing suitable for business, corporate and work wear. Stylish polo shirts, baseball caps and fleece jackets are just some of the great looking gear that is sure to be popular with companies and contribute to the success of the Club.



Opening hours... **WORLD OF PUNCH**

World of Punch, Postman Road

Opening hours 9.00am to 5.00pm Monday to Saturday
Matchdays from 9.00am to kick-off, and three-quarters of-an-hour after the match finishes. Match evenings from 9.00am to kick-off and three-quarters of-an-hour after the match finishes

World of Punch, Tower Ramparts

Opening hours 9.00am to 5.30pm Monday to Saturday

World of Punch, 42 Abbeygate St, Bury St. Edmunds

Opening hours 9.00am to 5.00pm Monday to Saturday

Ticket Talk

Town v Norwich City

@ Portman Road
Nationwide Division One
Tuesday 20th October,
7.45pm



At the time of going to press there were only a limited number of restricted view tickets available.

Stockport Co v Town

@ Edgeley Park
Nationwide Division One
Saturday 24th October,
3.00pm



Tickets are now on sale. Adult prices are £15.00, Senior Citizens are £8.00 and Juniors £6.00. Seats are in the Hardcastle Road Stand, which is along one side of the pitch and is covered. There will also be terrace tickets available on matchday priced at £13.00 for Adults, £8.00 for Senior Citizens

and £6.00 for Juniors. The standing area is in the Railway End at Edgeley Park, which is behind the goal and is uncovered.

Town v West Brom

@ Portman Road
Nationwide Division One
Saturday 31st October,
3.00pm



Tickets are now on sale.

Town v Wolves

@ Portman Road
Nationwide Division One
Tuesday 3rd November,
7.45pm



Tickets for this re-arranged fixture are now on sale. Any tickets purchased for the original date of Saturday 5th September are still valid for this game.

Please note:

The ITFC Ticket Office telephone number is: (01473) 400555.
For away travel tickets please ring the Development Association on 01473 400542

Office opening hours: 9am-5.30pm Monday to Friday
Open all day on Matchdays.

Also open prior to coach departures and for two hours after.

SUPPORTERS WISHING TO PURCHASE SPECIFIC SEATS FOR HOME MATCHES ARE REQUESTED TO BOOK AT LEAST 48 HOURS PRIOR TO THE GAME, AS WE NEED TO BEGIN PREPARING TICKETS FOR THE TURNSTILES THE DAY BEFORE A MATCH. THANK YOU.

Administration charges on telephone bookings have increased from 50p to 75p. This is the first such increase for five years and is highly competitive compared to other clubs and to Ticketmaster.

Travel Talk

In Association with Galloway European Coachlines

TO STOCKPORT COUNTY

Address: Edgeley Park, Hardcastle Road, Stockport, Cheshire, SK3 9DD

Phone: (0161) 286 8888

Away End: Hardcastle Road Stand/Railway End

BY ITFC Supporters' Coach

Depart Portman Road: 8am

Arrive Back at Portman Road: Approx. 10.30pm

Price: Portman Plus Members £15.00 (Adults), £10.50 (Concessions); Non-Members £15.50 (Adults), £11.00 (Concessions)

By Car: Take A12, then A14, A604 and A1 North to Junction 26. Exit to A610 and follow signs for Matlock and the A6. Stay on A6 past Buxton and Whaley Bridge until you pick up signs for Stockport Town Centre. You will come to a roundabout on the brow of a hill, next to the Bank of Scotland. Take the exit marked: Cheadle B5465 and Stockport County FC, into a dual carriageway. Take second left into Caroline Street for the ground.

By Rail: Stockport station is approximately half-a-mile from the ground and is an easy walk. British Rail from London Euston.

TO HUDDERSFIELD TOWN

Address: Alfred McAlpine Stadium, Leeds Road, Huddersfield, West Yorkshire, HD1 6PX

Phone: (01484) 484100

Away End: Gardiner Merchant South Stand

BY ITFC Supporters' Coach

Depart Portman Road: 8.30am

Arrive Back at Portman Road: Approx. 9.30pm

Price: Portman Plus Members £15.00 (Adults), £10.50 (Concessions); Non-Members £15.50 (Adults), £11.00 (Concessions)

By Car: A12, then A14, A604, A1 North towards Peterborough. Pick up the M62 and exit at Junction 25, taking the A644 and A62 signposted for Huddersfield. The Stadium is well signposted from here. Away fans can park at the St. Andrews Road car park (charge) and also nearby streets and waste ground.

By Rail: Huddersfield Station is about a mile from the ground, and a taxi will cost around £3.50. Bus numbers 201, 202, 203 and 207 run along Leeds Road.

GALLOWAY EUROPEAN COACHLINES

for

Coach hire, Holidays
and Excursions

Official Travel Sponsors

tel: **01449 766323**



News on Blues

The all-new Club magazine, **About Town**, is now out - and it makes a fantastic read for Town fans of all ages.

Issued FREE to Portman Plus Members, or on sale at all good newsagents for just 50p, the 20-page tabloid-sized publication is packed with fascinating features, colour photos, news, interviews, quizzes and competitions. In issue one you can see Matt Holland as never before, catch up with an Ipswich hero of yesteryear, read Chairman David Sheepshanks get a grilling from supporters and much more.

It's the best read in Town - so don't miss it!

Walk for Cancer

Tony Mowbray will be swapping his football boots for walking shoes when he takes part in a sponsored walk tomorrow (18th October) to raise money for breast cancer research.



Tony's wife, Bernadette, died on New Year's Day 1995 from the disease and he says: "Not a day goes by that I don't think of Bernadette and what she went through. I was proud to call her my wife and I'm

proud to be doing something which will help raise funds for

such vitally-needed research.

"I would urge people to join me and the lads from the Club as we put our best feet forward and take part in this easy to join event."

The walk is a four-mile circular amble and begins at 11am from Christchurch Mansion. All monies raised will be spent by the Imperial Cancer Research Fund as part of its annual £5m programme for breast cancer research. One in 12 women in the UK will get breast cancer at some time in their lives.

Ipswich Town FC is also showing its support for Imperial Cancer Research by having pink ribbons - the international symbol of breast cancer awareness - in the World of Punch stores through October. You can wear yours for a suggested donation to the charity of £1.00.



Today's Match Sponsors



ClubCall is extremely proud to now include Ipswich Town amongst its expanding portfolio of Premiership and Nationwide clubs.

Town's consistent performances over the past few seasons have again earmarked George Burley's men as promotion candidates this time around and, with the cream of England's young prospects tied down to the Club, the future is certainly bright at Portman Road.

For the first time ever, Ipswich supporters can now keep in touch with all the latest news from Portman Road via ClubCall's unrivalled network within the game. Stories will continue to be broken regularly on the line - **0891 12 10 68*** - and we can guarantee interviews with the men who matter. Indeed, Chairman David Sheepshanks opened the new service by informing callers of the truth on some tabloid newspaper speculation. **Ticket information can also be obtained on 0891 12 10 69***

Town fans can now join millions of football followers who check our Teletext advertising pages on a regular basis for new headlines from their clubs - so keep an eye on p.142 for the breaking stories as they happen.

Furthermore, callers can keep up-to-date with match action as it happens and also dial in to hear the manager's post-match thoughts after the game.

Remember the numbers and stay in the know.

* denotes: calls cost 50p per minute at all times.

Safety Announcement

Supporter 'A' - Banned until the end of the 1998/99 season for entering the ground while a ban is still in force.

Supporter 'B' - Banned until January 1999 for climbing over the new barrier in the North Stand.

Supporter 'C' - Banned until January 1999 for climbing over the new barrier in the North Stand.



Help us to keep Portman Road safe and friendly. Please conform to Ground Regulations and follow any instructions given by Stewards and Officials.



Who's Town's Best?

How many times have you sat in your local pub or club and argued over just who is the 'greatest ever Town player'? Well now you can have your say thanks to Ipswich Town and the Football League's Local Heroes Initiative - and win a special prize from ITFC into the bargain.

The Initiative aims to pick out just one player from each of the 72 Nationwide League clubs and include them in a centenary celebration list. Ipswich Town will provide a special prize for the first entry picked out in a lucky draw after the closing date for nominations of 31st October 1998.

Earlier in the year, the League announced its own list of 100 League Legends and to the surprise of many Town fans there wasn't a single Ipswich player included - so

now is your chance to show them who should have been honoured.

There are so many heroes to choose from, the decision is sure to be difficult. Older fans might plump for the likes of Ray Crawford or Ted Phillips, while names like Muhren, Thijssen, Beattie, Wark, Mariner, Burley and Mills all spring quickly to mind.

More recently, stars like Dozzell, Kiwomya and several members of today's squad could be your choice.

To cast your vote simply write the player's name on the back of a postcard or sealed, empty envelope, and send it to: Town Local Hero, Ipswich Town FC, Portman Road, Ipswich, IPI 2DA, to arrive before 31st October. Don't forget to include your own name and address and a daytime telephone number, so you can be contacted if you are the lucky winner.



IPSWICH TOWN



Today's match sponsor

ClubCall

Ipswich Town Ticket Line

0891
121
069

For the facts, not the fiction

0891
121
068

Calls charged at 50p per minute at all times





Ransomes World Class Turf Care.

Available from



By appointment to
H.M. The Queen
Supplier of Multicultural
Equipment

**RANSOMES AT
Bartram**



Bartram Mowers Ltd, Bermuda Road, Ransomes Park,
Nacton Industrial Est., Ipswich, Suffolk. Tel: (01473) 716335
Open Monday - Friday 8.00am - 5.30pm. Saturday 8.00am - 4.30pm.

RANSOMES

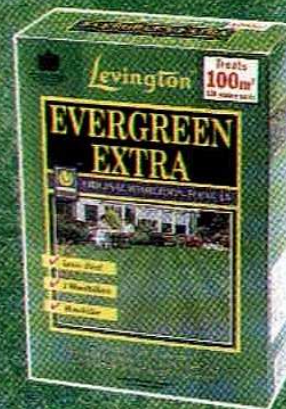
RANSOMES JACOBSEN LTD., RANSOMES WAY,
IPSWICH, ENGLAND IP3 9QG
TEL: (01473) 270000 FAX: (01473) 276300

TEXTRON

TURF CARE AND SPECIALTY PRODUCTS

Q. What's the
secret of a
beautiful lawn?

A.

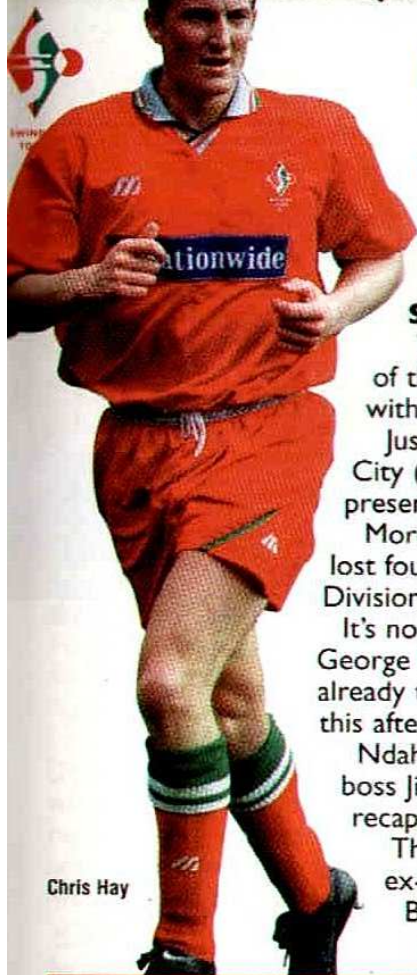


It's that simple!

Evergreen® Extra. Total lawn food which also controls most broad-leaved weeds and moss.
It's that simple. For answers to more lawncare questions, Freecall 0500 888558.

Always read the label. Use pesticides safely. Evergreen Extra contains MCPA, mecoprop-P and ferrous sulphate.
EVERGREEN is a registered Trade Mark of Levington Horticulture Ltd. © Levington Horticulture Ltd. 1998. Internet: www.levington.co.uk

in town today...



Chris Hay

Swindon Town

Swindon Town come to Portman Road this afternoon in a very different state of mind to their last visit here, in September last year.

Then they arrived in Ipswich unbeaten and were soon to soar to the very top of the First Division table, but today they arrive as a club trying to come to terms with the turmoil of a place in the bottom five and a newly-appointed manager.

Just three victories in the League so far - including local derby wins over Bristol City (3-2) and Oxford (4-1) - underline the reason that the Robins are rocking at present, and point to why Steve McMahon walked out on the club in mid-September.

More telling statistics are that since that Oxford victory, Swindon have played six, lost four and conceded 14 goals, giving them the worst defensive record in the First Division, although last Friday's 3-0 victory over Huddersfield lifted the mood somewhat.

It's not all been doom and gloom at the County Ground. The form of twin strikeforce George Ndah and Iffy Onuora has been pleasing and, with 13 goals between them already this term, the speedy and powerful front pair will certainly provide a challenge this afternoon.

Ndah enjoyed a purple patch of five goals in four games earlier this season, and new boss Jimmy Quinn will be hoping that the tall former Palace striker can quickly recapture that sort of poaching form.

There is experience galore in the Robins side - with old-stagers such as ex-England star Mark Walters and former Coventry City and Everton defender Brian Borrows using every ounce of their know-how to help bring the youngsters along.

The Manager



Jimmy Quinn



Following the recent departure of Steve McMahon after almost four years at the County Ground, it was to former Swindon playing favourite Jimmy Quinn that the Robins' board turned as new manager.

The hugely experienced Quinn, previously player-manager at Reading and last season's top scorer for Peterborough with 25 goals, began his professional career at the Wiltshire club back in 1981 and had a second spell there after rejoining for £50,000 from Blackburn in December 1986.

In addition, Quinn has represented Leicester City, Bradford City, West Ham and Bournemouth and has won almost 50 caps for Northern Ireland.

In partnership with Mick Gooding he took Reading to the brink of the Premiership, but disillusioned with life at Elm Park he resigned his post shortly before the end of the 1996/97 campaign.

At the age of 37, he linked up with Barry Fry at Peterborough on a free transfer during the 1997 close season and proved to be a priceless capture as his goals fired Posh to the brink of promotion from the Third Division. He was voted onto the PFA's Divisional Representative side for his troubles.

"Steve McMahon has left me a good bunch of lads and we'll quickly get them winning," said Quinn shortly after his appointment, and he has proved true to his word.

After two defeats and a goalless draw in his first three games, the Robins recorded an impressive 3-0 win over Huddersfield last Friday.

meet the players...

JIMMY GLASS

Position: Goalkeeper

Born: Epsom, 01.08.73

Age: 25 **Height:** 6ft 1in

From: Bournemouth (Free)

Ever-present for Bournemouth last season, Jimmy began his career with Crystal Palace and moved to the County Ground under the Bosman ruling during the summer. Helped Bournemouth to the Auto Windscreen Shield Final at Wembley in 1997/98.

FRANK TALIA

Position: Goalkeeper

Born: Melbourne, Aus, 20.07.72

Age: 26 **Height:** 6ft 1in

From: Blackburn (£150,000)

Following the departure of Fraser Digby during the summer, Frank has installed himself as first choice stopper at Swindon. Spotted by Blackburn playing for Australia's U21 side. Missed a chunk of last season with a knee injury.

BRIAN BORROWS

Position: Defender

Born: Liverpool, 20.12.60

Age: 37 **Height:** 5ft 10in

From: Coventry (Free)

Ever-present in the League so far this season, the experienced Borrows moved to Swindon in November 1997, after a successful two month loan spell. Previously with Everton, Bolton

and Bristol City (loan), he is comfortable anywhere along the back line or at sweeper.

SOL DAVIS

Position: Defender

Born: Cheltenham, 04.09.79

Age: 19 **Height:** 5ft 8in

From: YTS

Teenage defender who broke into the Swindon first-team towards the end of last season and has become a regular feature in 1998/99. A left-sided player, he likes to push forward and get in dangerous crosses.

GARETH HALL

Position: Defender

Born: Croydon, 12.03.69

Age: 29 **Height:** 5ft 8in

From: Sunderland (Free)

Welsh international who moved to the Robins in May 1998, having previously played in the Premier with Sunderland. Began with Chelsea and can play anywhere in midfield or at full-back.

DAVID KERSLAKE

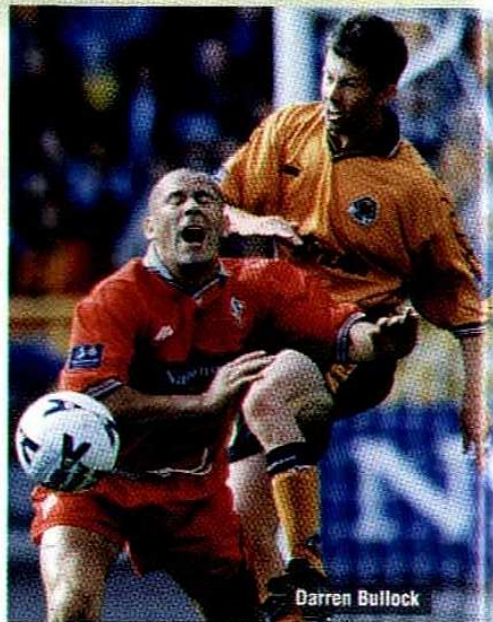
Position: Full-back

Born: Stepney, 19.06.66

Age: 32 **Height:** 5ft 9in

From: Ipswich (Free)

Former Ipswich player who is now enjoying his third stint at the County Ground, having rejoined from Portman Road in March 1998. Happy as a right wing-back or at sweeper, David is a former



Darren Bullock

England U21 international who has also played for QPR, Leeds, Tottenham, Charlton and Wycombe (loan).

ALAN McDONALD

Position: Central Defender

Born: Belfast, 12.10.63

Age: 35 **Height:** 6ft 2in

From: QPR (Free)

After 17 years loyal service at Loftus Road, ex-Northern Ireland captain Alan moved to Swindon in July 1997. An imposing central defender, he played in goal for Swindon last season, after Fraser Digby was sent-off against, of all people, QPR.

ALAN REEVES

Position: Central Defender

Born: Birkenhead, 19.11.67

Age: 30 **Height:** 6ft

From: Wimbledon (unknown)

An 'old fashioned' central defender who takes no prisoners at the back. Moved from the Premiership in search of regular first-team football during the summer and has been ever-present for the Robins so far.

CRAIG TAYLOR

Position: Central Defender

Born: Plymouth, 24.01.74

Age: 24 **Height:** 6ft 1in

From: Dorchester T. (£25,000)

The younger brother of

Club File...



Ground: County Ground

Nickname: The Robins

Colours: All red

Change Colours: Black and blue shirts; blue shorts; blue socks

Honours: Div Two Champions 1995/96; Div Three runners-up 1962/63, 1968/69; Div Four Champions 1985/86; FA Cup best Semi-Final 1910, 1912; League Cup winners 1969;

Anglo-Italian Cup winners 1970

Record buy: Joey Beauchamp (from West Ham, Aug 1994) £800,000

Record sale: Kevin Horlock (to Man City, Jan 1997) £1.5m

Last Season

League: 18th

FA Cup: Third Round

League Cup: First Round



ex-Robins favourite Shaun Taylor, Craig was snapped up from non-League football in April 1997. A groin injury delayed his debut, but he announced his arrival in fine style, scoring a 30-yarder in his opening match against Port Vale.

ADAM WILLIS

Position: Defender

Born: Nuneaton, 21.09.76

Age: 22 **Height:** 6ft 1in

From: Coventry (Free)

Recommended to former Swindon boss Steve McMahon by Brian Borrows, Adam impressed in a couple of trial matches last season and was duly snapped up during the summer.

DARREN BULLOCK

Position: Midfield

Born: Worcester, 12.02.69

Age: 29 **Height:** 5ft 9in

From: Huddersfield (£400,000)

Dogged and tough-tackling ball winner who struggled for a regular first-team place last season, but seems to have settled into the side this time around. Was almost sold to Stockport in early 1997/98, but failed to agree personal terms.

PHILIPPE CUERVO

Position: Midfield

Born: Calais, Fra, 13.08.69

Age: 29 **Height:** 5ft 11in

From: St. Etienne, Fra (Free)

Skilful right-sided wing-back or attacking midfielder who is a great favourite with the Swindon faithful. Was a revelation in the early part of last season, as the Robins stormed to the top of the table, but was later sidelined with a hip injury.

TY GOODEN

Position: Midfield

Born: Canvey Island, 23.10.72

Age: 25 **Height:** 5ft 8in

From: Wycombe (Free)

A former Arsenal apprentice, Ty is ever-present so far this season for Swindon. A Division Two title winner with the club in 1996, he

blast from the past

It has certainly been an interesting time to support Swindon Town over the past few years, as the club have enjoyed the best of times...and the worst of times.

Having set a record by notching up 102 points in winning the old Fourth Division in 1985/86, The Robins set about swiftly climbing up the League.

Under manager Ossie Ardiles they reached the Second Division Play-Off Final in 1989/90 where they beat Sunderland - but were forced to stay down after 'financial irregularities' committed during the reign of previous boss Lou Macari were uncovered.

In 1991, Ardiles was tempted to take over at Tottenham, and Swindon turned to his former team-mate Glenn Hoddle to take over. Hoddle duly inspired the club into the top flight - via another Play-Off victory - before leaving for the manager's job at Chelsea.

His successor, John Gorman, faced an impossible task, though, and the Robins set two unwanted records during



their year in the Premiership: their leaky defence shipped 100 goals, and the team won just five games. Not surprisingly, relegation followed and that was followed by more misfortune as the club promptly dropped out of the First Division the following season.

But in 1995/96 the roller-coaster was on the up again, new manager Steve McMahon building a team to win the Second Division Championship and put Swindon back in the First Division, where they remain.

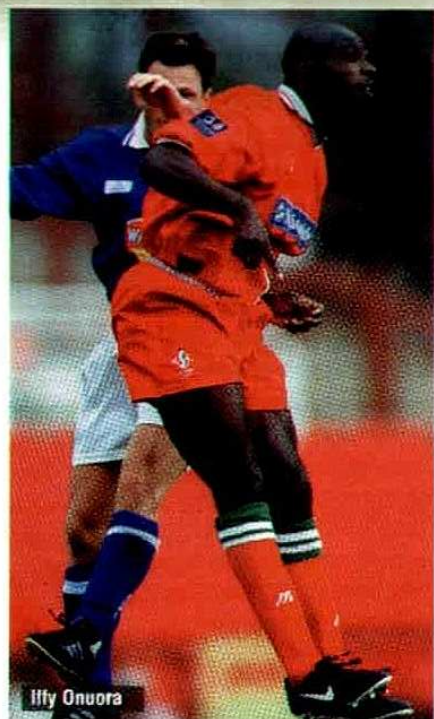


Among their most famous ex-players is the winger **Don Rogers**, who inspired the club - then in the Third Division - to victory over mighty Arsenal in the 1969 League Cup Final (picture above).

As for an Ipswich connection, full-back **David Kerslake** (left) rejoined the Robins from Town as recently as March this year.

The Robins





Iffy Onuora

is a left-sided attacking player who is an excellent crosser of the ball. Required surgery on an ankle injury during the summer.

STEPHEN HOWE

Position: Midfield
Born: Annitsford, 06.11.73
Age: 24 **Height:** 5ft 7in
From: Nott'm Forest (£30,000)
 Universally known as 'Bobby', this former Nottingham Forest player enjoyed a spell on loan here at Portman Road in 1996/97, when he played three League games. A good passer of the ball, he will be hoping to stake his claim for a regular place in the Swindon line-up this season.

SCOTT LEITCH

Position: Midfield
Born: Motherwell, 06.10.69
Age: 29 **Height:** 5ft 9in
From: Hearts (£15,000)
 Having enjoyed a successful loan spell at Swindon during the Division Two promotion campaign of 1996, Scott moved south permanently in the summer of that year. Injuries prevented any sort of consistency last season.

MARK WALTERS

Position: Midfield/winger
Born: Birmingham, 02.06.64
Age: 34 **Height:** 5ft 10in
From: Southampton (Free)
 Former Aston Villa, Rangers and Liverpool winger who has also won England caps at Schools, Youth, U21, 'B' and Full level. Ever-present so far this season, his dribbling skills and excellent crossing ability still mark him out as a dangerman, despite the advancing years.

KEVIN WATSON

Position: Midfield
Born: Hackney, 03.01.74
Age: 24 **Height:** 6ft
From: Tottenham (Free)
 A skilful midfield playmaker with good passing ability, who has struggled for consistency at the County Ground, and has therefore failed to hold down a regular first-team place. Played 12 top flight games for Spurs under Terry Venables.

STEVE COWE

Position: Forward
Born: Gloucester, 29.09.74
Age: 24 **Height:** 5ft 7in
From: Aston Villa (£100,000)
 Diminutive front man who possesses skill and pace in abundance. Often used as a sub, using his pace late in a game.

CHRIS HAY

Position: Forward
Born: Glasgow, 28.08.74
Age: 24 **Height:** 5ft 11in
From: Celtic (£330,000)
 Began 1997/98 in glorious style, blasting 13 goals in his first 18 games. A suspension in November seemed to affect his confidence, though, and he struggled to recapture that sparkling form.

GEORGE NDAH

Position: Forward
Born: Dulwich, 23.12.74
Age: 23 **Height:** 6ft 1in
From: C.Palace (£500,000)
 Powerful and quick young striker who is a former England Youth cap. Spent several years on the first-team fringe at Selhurst Park before becoming Steve McMahon's biggest signing when he moved to Swindon in November 1997.

IFFY ONUORA

Position: Forward
Born: Glasgow, 28.07.67
Age: 31 **Height:** 6ft 1in
From: Gillingham (£120,000)
 Seen as the perfect replacement for big Wayne Allison, Iffy endeared himself to Swindon fans with a spectacular goal on his debut in March 1998, and has continued banging them in ever since. He has netted eight in 11 games so far in 1998/99, having fully recovered from a fractured cheekbone sustained last season.

Other squad members include: Steve Mildenhall (goalkeeper); Mark Robinson (central defender); Lee Collins (midfield); Robin Hulbert (midfield).

Stat Attack



Swindon's recent League results...

| | | | | |
|--------|--------------|-----|------|--|
| Sep 09 | OXFORD | (h) | W4-1 | Ndah (8,86), Onuora (72,75) |
| Sep 12 | PORTSMOUTH | (a) | L2-5 | Onuora (65), Ndah (75) |
| Sep 19 | WATFORD | (h) | L1-4 | Ndah (29) |
| Sep 25 | TRANMERE | (a) | D0-0 | |
| Sep 29 | BOLTON | (a) | L1-2 | Onuora (88) |
| Oct 03 | STOCKPORT | (h) | L2-3 | Onuora (23), Walters (49) |
| Oct 09 | HUDDERSFIELD | (h) | W3-0 | Onuora (1), Walters (14), Bullock (38) |

Swindon's Leading League Scorers 1998/99

| | | |
|----------------|---|----------|
| Iffy Onuora | 8 | ⊙⊙⊙⊙⊙⊙⊙⊙ |
| George Ndah | 5 | ⊙⊙⊙⊙⊙ |
| Mark Walters | 3 | ⊙⊙⊙ |
| Darren Bullock | 1 | ⊙ |

THE TIMES THEY SCORED...

| | | | |
|-------|---|-------|---|
| 00-15 | 7 | 46-60 | 3 |
| 16-30 | 2 | 61-75 | 4 |
| 31-45 | 1 | 76-90 | 2 |

Player Sponsors

more
player
sponsors
overleaf




George Burley
UNIVERSITY
COLLEGE
SUFFOLK
Tel: 01473 255885




Dale Roberts
ipswich 01473 280284
colchester 01206 571894
bury st. edmunds 01284 724217
hair design group ltd.



Stewart Houston
Fenn Wright
RESIDENTIAL,
COMMERCIAL AND
AGRICULTURAL ESTATE
AGENTS, AUCTIONEERS
AND VALUERS
Telephone (01473) 232700



Bryan Klug
Psi-Base (UK) Ltd
South Suffolk
Business Centre
Sudbury



Paul Goddard
ROLLERWORLD
Eastgates, Colchester
Tel: 01206 868868



Dave Williams
Horry Money
Lound and Co. Solicitors
Tel: 0171 793 4012



Richard Wright
FEATHERSTONE
Featherstone Builders Ltd
Tel: 01473 231135



Lee Bracey
▲ Clacton Branch
ITFC
Supporters
■ Chris & Viv
Humton
● <http://www.stagedive.com/>
★ Matthew Newman
★ Adam, Alan,
Charlie, Dillon &
Stuart



Colin Stewart
To Sponsor this player
ring Sarah Scarlett
on 01473 400523



Mauricio Taricco
CLAYDEN FINANCIAL SERVICES
19A LONDON ROAD, STANWAY,
COLCHESTER 01206 500033
A member of DBS Financial Management
PLC which is regulated by the
Personal Investment Authority



Jamie Clapham
Specialists in control, recording and
indication of temperature, pressure,
level and flow for the process industries.
Tel: Sudbury (01787) 880962
LION (01787) 377779
Fax: (01787) 377779



John Kennedy
Ryte
CONSTRUCTION
Builders, Contractors & Underspinners
Telephone: (01638) 742868



Tony Mowbray
Low House Touring Caravan
Park, Bucklesham Road,
Foxhall, Ipswich.
Tel: 01473 659437
Camping also



Mark Venus
TOP COPIER
PRODUCTS For all your
office
equipment
Call 01206 761444



Jason Cundy
MARSHALL
WARREN
ESTATE AGENTS • MORTGAGES
FELIXSTOWE (01394) 670800



Manuel Thetis
THOSE WERE THE DAYS
MESSAGE BOARD
www.twtd.co.uk



Wayne Brown
Planet Technology Ltd
Information Technology Consultants.
Contact: Phil Goddard
Tel: 01473 603586



David Theobald
To Sponsor this player
ring Sarah Scarlett
on 01473 400523



Adam Tanner
LOW HOUSE
TOURING CENTRE,
FOXHALL, IPSWICH.
Phone: JOHN BOOTH
01473 659437



Kieron Dyer
TRANSAMERICA
TRAILER LEASING
Tel: 01394 613244
Fighury Road, Felixstowe, Suffolk IP11 8HJ



Matthew Holland
NORTHGATE
SPORTS CENTRE
01473 711211



Mick Stockwell
ANGLIA STAFF AGENCY
"THE PERSONNEL PEOPLE"
Telephone: (01284) 752987



Bobby Petta
Kevin Glover
Associates Ltd
Project and Change
Management
01371 876870



Marco Holster
DSC
MOTOR FACTORS
Vinces Road, Diss
01379 651978

Player Sponsors ...continued



Chris Keeble
Leo Muff
Switzerland



Stuart Niven
CH
C H Freight Services Ltd
Tel: 01394 676100



Danny Sonner

- ▲ Nigel Boreham & Phil Webber
- Richard, Jules, Tim & Daniel Germain
- ▼ The late Bernard Potter
- ◆ Holly Grove & Sean Salter
- Men with Mulletts
- ★ Those Were The Days
- ✦ Olive & Wally Sage




Sean Friars
FINDAJOB
(EAST ANGLIA LIMITED)
Tel: (01473) 258277
Ba Queen Street, Ipswich, Suffolk, IP1 1SS



David Johnson
MORSON
INTERNATIONAL
RECRUITMENT SPECIALISTS
TEL: 01728 832862



Terry Bowes
To Sponsor this player ring Sarah Scarlett on 01473 400523



Alex Mathie
ENSORS
Chartered Accountants
01473 233332



Richard Naylor
Helen and Julien Watson



James Scowcroft
Electrical Solutions
Bury St. Edmunds Suffolk
Tel: 01359 233201




Neil Midgley
LEGENDRE
Tel: 01473 620660



Louie Farrington
PORTIA Engineering Ltd,
Star Lane, Ipswich.
Tel: 01473 252334



Richard Logan
FALCON PROMOTIONS
FOR BUSINESS GIFTS
TEL: 01359 244007



Adam Miller
Nightingales of Essex Ltd
Civil Engineers and Groundwork Contractors
Tel and Fax: 01206 576162



Matt Dixon
South Lee School
Bury St. Edmunds
Tel: 01284 754654



Sponsor Key

- ▲ Shirt
- Tracksuit
- ▼ Training Kit
- ◆ Shorts
- Socks
- ★ Gloves
- ✦ Boots

Coming at you 24 hours a day !
Ipswich Town's Official Web Site www.itfc.co.uk

brought to the Internet by **SUFFOLK Web** 0800 980 24 25

Ipswich Town Family Enclosure Sponsors

STRIKE UP A PARTNERSHIP WITH BARCLAYS - AND ALWAYS GET THE RIGHT RESULT

WE'RE PLEASED TO GIVE OUR SUPPORT.

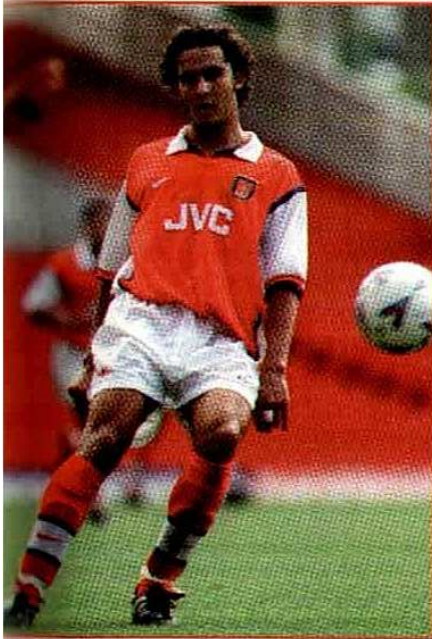
IF YOU'RE BETTER OFF TALKING TO BARCLAYS

Ipswich Branches: 1 Princes Street
691 Woodbridge Road
299a Hawthorn Drive
(01473) 217017



Introducing...

Paolo Vernazza



A warm Portman Road welcome goes out to 18-year-old Paolo Vernazza, who was on the substitute's bench for Town's match with Crystal Palace, having recently joined us on loan from Arsenal.

Paolo is very highly-rated by the Arsenal staff and has come to Ipswich to gain some experience, although the Gunners have expressed no interest in selling him as yet.

London-born of Italian parents, Paolo is a right-sided player who can operate on the wing, in midfield or up front.

He is quick, skilful and direct

and made his senior debut for Arsenal in the Coca-Cola Cup against Birmingham last season, and also featured in a Premiership match at Crystal Palace.

He progressed through the Gunners' prolific youth system, along with Town's Reserve midfielder Terry Bowes, and both players are very well thought of by first-team coach Stewart Houston, who was, of course, previously assistant manager at Highbury.

His first appearance for Town came in Tony Adcock's testimonial at Colchester United on Tuesday evening, which Ipswich lost 1-0.

£20,000

 **Nationwide**

OFFICIAL SPONSOR OF THE FOOTBALL LEAGUE

Nationwide League giveaway

Tickets, football kits, VIP trips to Wembley.
Entry form only in **FourFourTwo** magazine, on sale now

To subscribe, call the hotline on
01795 414811
Quote Ref. 100198

The quite remarkable football competition. Only in **FourFourTwo** magazine



Next at Portman Road



Norwich City

Tuesday 20th October, kick-off 7.45pm

Expect a full house at Portman Road on Tuesday evening, as Town host our neighbours from Norfolk in the 65th League 'derby' match between the two clubs.

So far the record stands at 33 wins for Ipswich, with nine draws - and all Town fans will be keen to see a repeat of last season's 5-0 drubbing handed out to the Canaries here.

A first-half hat-trick from Alex Mathie and a brace after the break from Bobby Petta did the damage on that famous day in February, but what price a repeat performance on Tuesday?

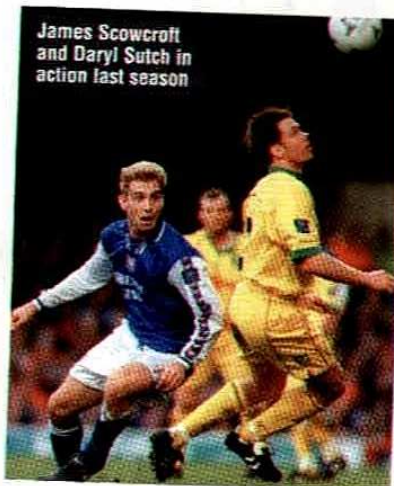
Norwich, now under the coaching partnership of Bruce Rioch and former Town favourite Bryan Hamilton, started the current campaign in fine form with four wins in their first five games, and looked set to take the division by storm. But their progress has slowed since then and, despite remaining unbeaten at home, they have started to wobble a little away from Carrow Road.

Star turn for the Canaries has been their 19-year-old



Craig Bellamy

Welsh international striker Craig Bellamy, who netted for Wales in their remarkable 2-1 victory against Denmark in Copenhagen last weekend and top scored in 1997/98 with 13 goals. Bellamy has netted seven times in the League for Norwich this season, prior to today's matches, and looks certain to be the main dangerman to worry Town on Tuesday.



James Scowcroft and Daryl Sutch in action last season

NORWICH'S FORM LAST SEASON

Player of the Year:

Matt Jackson

Top Scorer:

Craig Bellamy (13)

Ever-present: No-one

Final League Position: 15th

FA Cup:

Third Round (lost to Grimsby)

Coca-Cola Cup:

First Round (lost to Barnet)

Biggest Home Win

5-0 v Huddersfield, Swindon

Heaviest Home Defeat

0-4 v Charlton

Biggest Away Win

3-1 v Huddersfield

Heaviest Away Defeat

0-5 v Ipswich, Wolves

Results v ITFC

Ipswich 5 Norwich 0

Norwich 2 Ipswich 1

Other players to watch out for include the highly-rated Darren Eadie, Welsh target man Iwan Roberts and former Scotland international midfield star Peter Grant.

The Canaries will want to bury the memories of their last visit here, preferring instead to recall Town's trip to Carrow Road in September 1997, when the home

side won 2-1 courtesy of a Darren Eadie strike and an unfortunate own goal from Jason Cundy.

The East Anglian 'derby' is always one of the highlights of the year for Ipswich and Norwich fans, and this one is sure to be no different, with both clubs chasing promotion with sides full of attacking flair and defensive solidity.

It's likely to be a sell-out - don't miss it.

Today's Programme Sponsor

HANSA HIRE LIMITED

A COMPLETE EQUIPMENT
HIRE FOR YOUR EVENT
MARQUEES • PAGODAS • SPACE COVERS
QUALITY & SERVICE

IPSWICH

TEL: (01473) 240080 / 462263

FAX: (01473) 240002

DALES ROAD, IPSWICH, IP1 4JR



Matt Chat

An early-term report from our man Matt

Right on course

It is amazing what a couple of wins can do in this division.

After two disappointing results against Luton in the Worthington Cup and Watford in the League, we got back to winning ways with good victories over Tranmere and Crystal Palace.

We completely dominated the game up at Prenton Park, they were pretty disappointing to be honest, and then a few days later turned over Terry Venables' side at Portman Road, with those six points taking us into the top five or six in the table.

The division is very tight but we have made a much better start than last term and have moved up in to a good position without completely firing on all cylinders.

Last year we had a very slow start and were nowhere at Christmas until we put that terrific run together that took us in to the Play-Offs.

So we have to be fairly happy with the way things are at the moment and six more points from our next two matches would be very welcome.

Swindon are sure to make it difficult for us today and then of course we have Norwich three days later but with both games at Portman Road, I see no reason why we shouldn't be in a higher position come Tuesday night.

There are certainly no easy games in this division and teams coming to Portman Road often set out to keep things very tight against us and maybe hope to catch us on the break.

In some ways that is a compliment to us in that clubs are willing to show us respect and keep a lot of players behind

the ball but that also brings problems for us in that it limits the space and opportunities to get behind the opposition.

David Johnson's pace is very important to us in that respect because he can unsettle the best organised defences with his speed. You know that you can put the ball over the top and he will be in with a real chance of getting there first.

He is such a handful for opponents and with Alex Mathie and James Scowcroft alongside him and Richard Naylor waiting in the wings we have an attack that's as good as any side in the division.

That verdict could also be directed at the team in general. When we kicked off the season I felt that we were as good as any side in the First Division and more than capable of reaching the Play-Offs at least.

Yes, there are some strong sides up against us. Bolton, I'm sure, will be in contention for honours at the end of the season and we have all seen what Sunderland can do at first hand, but if we can have a good run free of injuries then we are promotion contenders, no doubt about it.

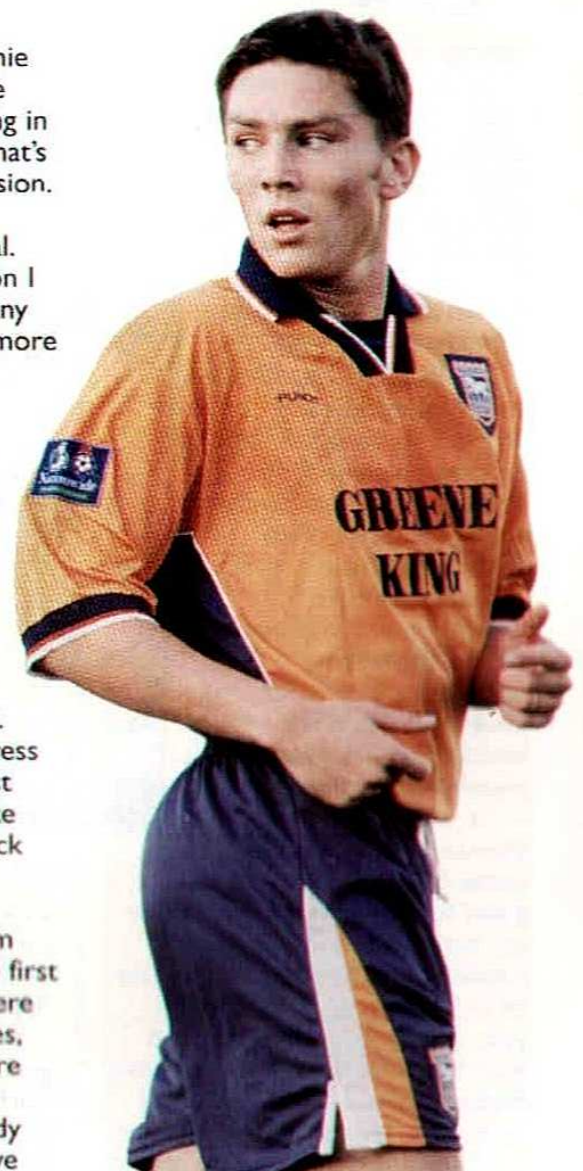
We have made steady progress after that slow start in the first few games and have players like Tony Mowbray and Scowie back from injury to add to the competition for places.

That is another big plus from this time last season. After the first few months of last year, we were having a nightmare with injuries, especially in attack, and I'm sure that affected our early results.

Now, apart from Jason Cundy and a couple of others, we have

been fairly clear of knocks and have a number of players pushing for places and you need that competition to be successful.

Depth of squad strength is vital to any club's ambitions and if we can maintain that high level of competition then I see no reason why we shouldn't be up at the top come May.



Youth and Reserves

A regular look at life away from the first-team scene



with Paul Goddard

An exceptional start by Arsenal threatened to blow Town away in their recent U19 Academy League match at the Gunners' training ground at London Colney.

But Paul Goddard's side weathered the early storm and bounced back to cause plenty of problems of their own in the second-half of an enthralling game.

They may have eventually lost the match 3-1 to their classy opponents, but coach Paul Goddard expressed himself satisfied with a promising second 45 minutes.

"It was a very high standard game. Arsenal came out and were extremely good for the first 25 minutes or so, they really took us apart," explained Paul. "They scored one of the best goals I've seen this year at any level after just two minutes, a lovely one touch move finishing with an accurate cross into the area and a good header.

"They scored again after about

ten minutes, and that really rocked us onto our heels. It took our boys a good half-an-hour to recover and get their shape back and their wits about them.

"Plus points from that stage of the game were that Colin Stewart made a couple of good saves and Titus Bramble was excellent in central defence, so that helped us to stay in touch.

"But credit to our lads, they gathered themselves together and slowly got back into the game.

"Carl Wright, who was having to play in midfield for us, broke

forward and got through into a one-on-one situation from which he scored. That took us in at half-time at 2-1 down and gave the boys a bit of a confidence boost."

An in-depth team-talk

from Paul saw the boys improve their showing to produce an exciting and even second period, with Town taking the game to their more glamorous opponents.

But, just as Ipswich looked like getting right back into the game, Carl Wright got caught in possession deep in his own half and Town ended up conceding a

penalty, from which Arsenal scored to make it 3-1.

"That was a little bit against the run of the play," said Paul. "And I wondered how the boys were going to react, but they dug back in and kept going forward."

With fifteen minutes left, Town were awarded a spot-kick of their own, but unfortunately Wright saw his effort saved. "It was an eventful

day for him," reflected Paul during the week.

"But it was a pleasure to see some of the football being played, by both teams, and a good lesson for the boys in trying to deal with the kind of quality which Arsenal presented them with.

"Some of our boys froze a little on the day and struggled to cope, but it shows them what level they need to achieve."

The Youth team had a fortnight's break between the Arsenal match and last night's visit of Coventry City, leading Paul to say: "It would have been nice to have had a game straight after Arsenal just to keep things moving along.

"But the break has also done us a bit of good. Some of the young first years who have only just come into full-time football needed a couple of days off from what can be a punishing schedule and it allowed us to give them that bit of time.

"We also stepped up our stamina work in training, and then gave all the lads a little break which was good. They were certainly all champing at the bit to get going again last night."

Colin Stewart made a couple of good saves and Titus Bramble was excellent in central defence."



Carl Wright



The Reserves have kept their recent run of good form going with two impressive Avon Insurance Combination League victories in recent weeks.

The second string, coached this season by Assistant Manager Dale Roberts, have now lost just twice in eight League games and have scored 12 goals in their last four outings.

Ten days ago, Dale's side travelled to the University Sports Ground in New Malden, Surrey, for a clash with Kevin Keegan's big spending Fulham.

Former Town favourite Gus Uhlenbeek was in the Cottagers' side for the fixture, which turned out to be a real thriller.

There was little indication of the excitement to come as Town cruised to a 2-0 half-time lead through Neil Midgley and Stuart Niven.

"We could have been three or four up at half-time," said Dale Roberts after the game, reflecting on missed chances in the opening period.

But if Town had any thoughts of resting on their laurels they were soon shattered, as some sloppy defending allowed the London side back onto level pegging within three minutes of the re-start.

And then the fun really began. Midgley, enjoying a successful run in front of goal, restored Town's lead, before Fulham again clawed their way back.

A Richard Naylor cross was sidefotted in by Stuart Niven to make it 4-3, and when Naylor himself profited from another cross - this one supplied by Chris Keeble - the visitors looked once

more to be heading for a comfortable victory.

But Fulham were nothing if not fighters, and former Tottenham and Gillingham midfielder Neil Smith swooped to reduce the arrears once more shortly before the end of the match.

While being great to watch, it was enough to have defensive coaches tearing their hair out. Dale, though, was philosophical.

"It was an exciting game and I was pleased with our all-round creative play.

I felt that all five of our goals were well worked, good passing



Richard Naylor

moves, although I was less happy with some of our defending.

"But our movement off the ball was good and we had some pleasing hold up play.

"We struggled to score in our first few games, but now we have got nine in three and I have to be happy with that."

The second string followed their Fulham thriller with another pleasing result in their most recent Family Night Football

fixture at Portman Road, last Wednesday evening.

Barnet were the visitors, and they went home on the end of a 3-1 defeat on the same night that England played Luxembourg in a European Championship Qualifying game.

Richard Naylor, vying for a place back in George Burley's first-team plans, continued where he left off the previous week, by netting twice. He was only denied a hat-trick when referee Peter Barnes disallowed a 75th minute for an alleged push.

Town had fallen behind early on, but always looked in control and were soon back level when Terry Bowes slotted home pass from Midgley after 17 minutes.

The next dose of Family Night Football sees Wycombe visiting on Wednesday 28th October.

Avon Insurance Combination League

| | P | W | D | L | F | A | Pts |
|--------------|---|---|---|---|----|----|-----|
| Southampton | 7 | 5 | 1 | 1 | 20 | 5 | 16 |
| Charlton | 7 | 5 | 1 | 1 | 14 | 6 | 16 |
| QPR | 6 | 4 | 2 | 0 | 14 | 4 | 14 |
| Luton | 7 | 4 | 2 | 1 | 15 | 9 | 14 |
| Watford | 6 | 4 | 1 | 1 | 15 | 3 | 13 |
| Arsenal | 6 | 4 | 1 | 1 | 14 | 5 | 13 |
| Portsmouth | 7 | 4 | 1 | 2 | 13 | 8 | 13 |
| Bournemouth | 7 | 4 | 1 | 2 | 12 | 9 | 13 |
| Peterborough | 7 | 4 | 0 | 3 | 13 | 11 | 12 |
| Ipswich | 8 | 3 | 3 | 2 | 14 | 13 | 12 |
| Brighton | 7 | 3 | 2 | 2 | 8 | 12 | 11 |
| Norwich | 6 | 3 | 1 | 2 | 8 | 5 | 10 |
| Chelsea | 7 | 3 | 1 | 3 | 9 | 10 | 10 |
| Fulham | 5 | 2 | 2 | 1 | 11 | 7 | 6 |
| Millwall | 5 | 2 | 2 | 1 | 9 | 6 | 6 |
| C.Palace | 8 | 2 | 2 | 4 | 18 | 19 | 8 |
| Barnet | 8 | 2 | 2 | 4 | 12 | 23 | 8 |
| Wimbledon | 6 | 1 | 4 | 1 | 7 | 8 | 7 |
| Cambridge | 5 | 2 | 1 | 2 | 5 | 10 | 7 |
| Oxford | 6 | 2 | 0 | 4 | 9 | 11 | 6 |
| West Ham | 5 | 1 | 2 | 2 | 7 | 7 | 5 |
| Northampton | 6 | 1 | 2 | 3 | 3 | 6 | 5 |
| Reading | 7 | 1 | 2 | 4 | 8 | 16 | 5 |
| Gillingham | 7 | 1 | 2 | 4 | 5 | 13 | 5 |
| Brentford | 5 | 1 | 1 | 3 | 6 | 9 | 4 |
| Swindon | 6 | 1 | 1 | 4 | 7 | 13 | 4 |
| Wycombe | 6 | 1 | 1 | 4 | 6 | 13 | 4 |
| Colchester | 8 | 1 | 1 | 6 | 5 | 18 | 4 |
| Tottenham | 5 | 1 | 0 | 4 | 2 | 8 | 3 |

Ipswich details correct at 15.10.98

Portman Diary

A day-by-day look at recent events which have affected Ipswich Town



Saturday 3rd

October: Town put in a good performance to comfortably beat Terry Venables' Crystal Palace side at Portman Road. A Mark Venus penalty on the stroke of half-time looks like being Ipswich's only reward for a game they dominate from start to finish, but two spectacular strikes in the last ten minutes give the scoreline a more realistic look. Mauricio Taricco (pictured) caps a fine 60

yard run with a rocket shot into the net, and then Alex Mathie comes off the bench to finish off a flowing move and make it 3-0. Loan signing Paolo Vernazza, from Arsenal, is on the substitute's bench, but does not figure. Meanwhile, it is revealed that Ipswich may miss out on staging an England U21 international after the proposed friendly with Yugoslavia on Tuesday 17th November is cancelled by the FA, who feel that "in the current circumstances in Kosovo" a friendly would be "insensitive in the extreme and wrong." The FA are trying to line-up alternative opponents.

Monday 5th October: Tickets go on general sale for the 'derby' clash with Norwich on Tuesday 20th October. There are less than 4,000 seats left, of which 1,500 have restricted views, and Ticket Office manager Bill Leggate explains: "We don't

expect to have many left by the end of tomorrow."

Tuesday 6th October: Despite speculation, Club Chairman David Sheepshanks is quoted as saying that "no concrete offers" have been received for Kieron Dyer, Richard Wright or any other of Town's young players. It is revealed that Danny Sonner has been told he can leave the Club for a fee of around £75,000.

Wednesday 7th October: There's a cracking Avon Insurance Combination League fixture between Town and Fulham. Gus Uhlenbeek is in the Fulham line-up, but can do little to prevent Town scoring five times in a nine-goal thriller. Stuart Niven and Neil Midgley score two each and Richard Naylor adds the fifth for Ipswich.

Thursday 8th October: Kieron Dyer and Richard Wright are away preparing for tomorrow night's England U21 clash with Bulgaria at Upton Park. Sean Friars also travels to join up with Northern Ireland's U21 squad for their match against Finland. Town's Nationwide League match at QPR, due to be played on Saturday, has been rescheduled for Wednesday 2nd December, kick-off 7.45pm.

Friday 9th October: Richard Wright and Kieron Dyer are both in the starting line-up as England U21s take on Bulgaria. Watched by Town boss George Burley, Dyer is substituted with a hamstringing injury on 63 minutes as England win the game 1-0. Ipswich launch a new 20-page, full colour Club publication called About Town for supporters. It will be distributed free to Portman Plus members, and can be bought over the counter for just 50p.

Further updates in Tuesday's Programme.

HAWK EXPRESS

24Hr Cab Service

Fully Licensed
Private Hire, Taxis
& 8 Seater
Minibuses

☎ (01473) 222222

4 Old Foundry Road
IPSWICH IP4 2AS

Fax: 01473 222221

Light Cargo

Same Day UK &
Europe Express
Deliveries up to 7.5t

☎ (01473) 715050

484A Felixstowe Road
IPSWICH IP3 3SU

Fax: 01473 273888

Visit us online at <http://www.hawkexpress.co.uk>



top dog for music • videos • games
20 Tavern Street, Ipswich

Youth and Reserve Fixtures

Avon Insurance Combination League Fixtures

Coach: Dale Roberts

| AUGUST | | Score | 1 | 2 | 3 | 4 | 5 | 6 | 7 | 8 | 9 | 10 | 11 | 12 | 13 | 14 |
|---------------------|---------------------|-------|--------|---------|---------|--------|----------|---------|----------|---------|---------|-----------|--------|---------------|-----------------|------------|
| Mon 17 | Chelsea (a) | 1-1 | Bracey | Kennedy | Burgess | Niven | Theobald | Bramble | Bowes | Mason | Midgley | Keeble | Logan | Fox (70) | Farrington (74) | Dixon (88) |
| Wed 26 | CHARLTON ATH (h) | 1-1 | Bracey | Kennedy | Burgess | Latapy | Tanner | Brown | Mason | Holster | Naylor | Scowcroft | Friars | Keeble (60) | Niven (77) | Bowes (70) |
| SEPTEMBER | | | | | | | | | | | | | | | | |
| Wed 2 | WIMBLEDON (h) | 0-2 | Bracey | Kennedy | Holster | Latapy | Theobald | Brown | Keeble | Somer | Naylor | Midgley | Mason | Niven | Bowes | Burgess |
| Wed 16 | Southampton (a) | 0-2 | Bracey | Kennedy | Holster | Niven | Bramble | Brown | Bowes | Keeble | Naylor | Midgley | Friars | Theobald | Fox | Delany |
| Wed 23 | BOURNEMOUTH (h) | 3-1 | Bracey | Kennedy | Holster | Niven | Bramble | Brown | Bowes | Keeble | Naylor | Mathie | Friars | Midgley (62) | Theobald (62) | Logan |
| Wed 30 | Brighton & HA (a) | 1-1 | Bracey | Kennedy | Holster | Niven | Howtrey | Brown | Theobald | Keeble | Naylor | Midgley | Friars | Bowes (45) | Fox | Dixon |
| OCTOBER | | | | | | | | | | | | | | | | |
| Wed 7 | Fulham (a) | 5-4 | Bracey | Kennedy | Brown | Tanner | Mowbray | Keeble | Vornazza | Niven | Holster | Midgley | Naylor | Bowes (85) | Theobald | C.Wright |
| Wed 14 | BARNET (h) | 3-1 | Bracey | Kennedy | Holster | Niven | Tanner | Brown | Bowes | Keeble | Naylor | Midgley | Friars | Theobald (62) | Fox | Dixon |
| Wed 28 | WYCOMBE WDRS (h) | | | | | | | | | | | | | | | |
| NOVEMBER | | | | | | | | | | | | | | | | |
| Tue 3 | QPR (a) | | | | | | | | | | | | | | | |
| Wed 18 | WATFORD (h) | | | | | | | | | | | | | | | |
| Wed 25 | Luton Town (a) | | | | | | | | | | | | | | | |
| DECEMBER | | | | | | | | | | | | | | | | |
| Wed 2 | NORTHAMPTON T. (h) | | | | | | | | | | | | | | | |
| Wed 9 | CAMBRIDGE UTD (h) | | | | | | | | | | | | | | | |
| Wed 16 | Oxford Utd (a) | | | | | | | | | | | | | | | |
| Tue 22 | Peterborough U. (a) | | | | | | | | | | | | | | | |
| JANUARY 1999 | | | | | | | | | | | | | | | | |
| Wed 6 | PORTSMOUTH (h) | | | | | | | | | | | | | | | |
| Mon 11 | Reading (a) | | | | | | | | | | | | | | | |
| Wed 20 | SWINDON TOWN (h) | | | | | | | | | | | | | | | |
| FEBRUARY | | | | | | | | | | | | | | | | |
| Tue 2 | Millwall (a) | | | | | | | | | | | | | | | |
| Wed 10 | GILLINGHAM (h) | | | | | | | | | | | | | | | |
| Wed 24 | C.Palace (a) | | | | | | | | | | | | | | | |
| MARCH | | | | | | | | | | | | | | | | |
| Wed 10 | BRENTFORD (h) | | | | | | | | | | | | | | | |
| Thu 25 | Norwich City (a) | | | | | | | | | | | | | | | |
| Wed 31 | COLCHESTER UTD (h) | | | | | | | | | | | | | | | |
| APRIL | | | | | | | | | | | | | | | | |
| Wed 7 | West Ham Utd (a) | | | | | | | | | | | | | | | |
| Wed 14 | TOTTENHAM H. (h) | | | | | | | | | | | | | | | |
| Mon 19 | Arsenal (a) | | | | | | | | | | | | | | | |

All home reserve matches will take place at Portman Road, kick-off 7.00pm, unless otherwise reported.

U19 Academy Fixtures

Coach: Paul Goddard

| SEPTEMBER | | Score | 1 | 2 | 3 | 4 | 5 | 6 | 7 | 8 | 9 | 10 | 11 | 12 | 13 | 14 | 15 | 16 |
|---------------------|---------------------|-------|---------|--------|-----------|-----|---------|------------|--------|---------|-------|-------|--------|-------------|--------------|--------------|-------------|--------|
| Sat 5 | Blackburn R. (a) | 1-2 | Stewart | Supple | Artun | Fox | Bramble | Farrington | Delany | Dixon | Logan | Bowes | Inglis | Miller (4) | Moffatt (76) | Wright (86) | Riley | Barker |
| Sat 12 | LEEDS UTD (h) | 2-0 | Stewart | Supple | Artun | Fox | Bramble | Farrington | Bowes | Asiamah | Logan | Dixon | Delany | Miller (57) | Wright (57) | Barker (77) | Moffatt | Riley |
| Sat 19 | CREWE ALEX (h) | 1-1 | Stewart | Supple | Woolnough | Fox | Moffatt | Farrington | Miller | Asiamah | Logan | Dixon | Delany | Wright | Riley | Snowdon | Campbell | - |
| Sat 26 | Millwall (a) | 1-2 | Stewart | Supple | Woolnough | Fox | Bramble | Artun | Miller | Asiamah | Logan | Dixon | Delany | Wright (58) | Moffatt | Riley (57) | Barker (58) | - |
| OCTOBER | | | | | | | | | | | | | | | | | | |
| Fri 2 | Arsenal (a) | 1-3 | Stewart | Supple | Woolnough | Fox | Bramble | Moffatt | Wright | Miller | Logan | Dixon | Bowes | Delany (75) | Barker (58) | Asiamah (58) | - | - |
| Fri 16 | COVENTRY C. (h) | | | | | | | | | | | | | | | | | |
| Sat 24 | TOTTENHAM H. (h) | | | | | | | | | | | | | | | | | |
| Sat 31 | West Ham Utd (a) | | | | | | | | | | | | | | | | | |
| NOVEMBER | | | | | | | | | | | | | | | | | | |
| Sat 7 | NORWICH CITY (h) | | | | | | | | | | | | | | | | | |
| Sat 14 | NOTT'M FOREST (h) | | | | | | | | | | | | | | | | | |
| Sat 21 | Watford (a) | | | | | | | | | | | | | | | | | |
| Sat 28 | PETERBOROUGH U. (h) | | | | | | | | | | | | | | | | | |
| DECEMBER | | | | | | | | | | | | | | | | | | |
| Sat 12 | MILLWALL (h) | | | | | | | | | | | | | | | | | |
| Sat 19 | ARSENAL (h) | | | | | | | | | | | | | | | | | |
| JANUARY 1999 | | | | | | | | | | | | | | | | | | |
| Sat 16 | Coventry C. (a) | | | | | | | | | | | | | | | | | |
| Sat 30 | Tottenham H. (a) | | | | | | | | | | | | | | | | | |
| FEBRUARY | | | | | | | | | | | | | | | | | | |
| Sat 13 | WEST HAM UTD (h) | | | | | | | | | | | | | | | | | |
| Sat 20 | Norwich City (a) | | | | | | | | | | | | | | | | | |
| Sat 27 | Sheffield Wed (a) | | | | | | | | | | | | | | | | | |
| MARCH | | | | | | | | | | | | | | | | | | |
| Sat 6 | WATFORD (h) | | | | | | | | | | | | | | | | | |
| Sat 20 | Peterborough U. (a) | | | | | | | | | | | | | | | | | |
| Sat 27 | Fulham (a) | | | | | | | | | | | | | | | | | |

Home Academy matches are liable to take place at a variety of venues this season. Please see the programme or local press for full details nearer the date of each match



Stats and Facts 1



AUGUST 1998

| | 1 | 2 | 3 | 4 | 5 | 6 | 7 | 8 | 9 | 10 | | |
|---|--------|-----|--------|-----------|---------|---------|---------|-------|------|---------|---------|-----------|
| Sun 9 Grimsby Town | 7,211 | 0-0 | Wright | Stockwell | Taricco | Clapham | Mowbray | Venus | Dyer | Holland | Johnson | Holster |
| Tue 11 Exeter (W'ron Cup 1st Rd 1st leg, a) | 3,233 | 1-1 | Wright | Stockwell | Taricco | Clapham | Mowbray | Venus | Dyer | Holland | Johnson | Naylor |
| Sat 15 Bury | 13,267 | 0-0 | Wright | Stockwell | Taricco | Clapham | Mowbray | Venus | Dyer | Holland | Johnson | Naylor |
| Tue 18 Exeter (W'ron Cup 1st Rd 2nd leg, b) | 7,952 | 5-1 | Wright | Stockwell | Taricco | Clapham | Mowbray | Venus | Dyer | Holland | Johnson | Mathie |
| Sat 22 Portsmouth | 12,002 | 0-0 | Wright | Stockwell | Taricco | Clapham | Mowbray | Venus | Dyer | Holland | Johnson | Mathie |
| Sat 29 Sunderland | 15,813 | 0-2 | Wright | Stockwell | Taricco | Clapham | Mowbray | Venus | Dyer | Holland | Johnson | Mathie |
| Mon 31 Port Vale | 5,485 | 3-0 | Wright | Tanner | Taricco | Clapham | Mowbray | Venus | Dyer | Holland | Johnson | Scowcroft |

SEPTEMBER

| | | | | | | | | | | | | |
|---|--------|-----|--------|-----------|---------|---------|---------|--------|------|---------|---------|-----------|
| Tue 8 Bradford City | 11,596 | 3-0 | Wright | Tanner | Taricco | Clapham | Mowbray | Venus | Dyer | Holland | Johnson | Scowcroft |
| Sat 12 Oxford United | 6,632 | 3-3 | Wright | Tanner | Taricco | Clapham | Thetis | Venus | Dyer | Holland | Johnson | Scowcroft |
| Tue 15 Luton (W'ron Cup 2nd Rd 1st leg, b) | 9,032 | 2-1 | Wright | Stockwell | Taricco | Clapham | Thetis | Venus | Dyer | Holland | Johnson | Scowcroft |
| Sat 19 Bristol City | 13,657 | 3-1 | Wright | Stockwell | Taricco | Clapham | Thetis | Tanner | Dyer | Holland | Johnson | Scowcroft |
| Tues 22 Luton (W'ron Cup 2nd Rd 2nd leg, a) | 5,955 | 2-4 | Wright | Stockwell | Taricco | Tanner | Thetis | Venus | Dyer | Holland | Johnson | Scowcroft |
| Sat 26 Watford | 13,109 | 0-1 | Wright | Stockwell | Taricco | Tanner | Thetis | Venus | Dyer | Holland | Johnson | Scowcroft |
| Tue 29 Tranmere Rovers | 5,072 | 2-0 | Wright | Stockwell | Taricco | Clapham | Thetis | Venus | Dyer | Holland | Johnson | Scowcroft |

OCTOBER

| | | | | | | | | | | | | |
|-----------------------------------|--------|-----|--------|-----------|---------|---------|--------|-------|------|---------|---------|-----------|
| Sat 3 Crystal Palace | 16,837 | 3-0 | Wright | Stockwell | Taricco | Clapham | Thetis | Venus | Dyer | Holland | Johnson | Scowcroft |
| Sat 17 Exeter Town | | | | | | | | | | | | |
| Tue 20 Norwich City | | | | | | | | | | | | |
| Sat 24 Stockport County | | | | | | | | | | | | |
| Tues/Wed 27/28 (W'ron Cup 3rd Rd) | | | | | | | | | | | | |
| Sat 31 West Bromwich Albion | | | | | | | | | | | | |

NOVEMBER

| | | | | | | | | | | | | |
|-----------------------------------|--|--|--|--|--|--|--|--|--|--|--|--|
| Tue 3 Wolverhampton Wanderers | | | | | | | | | | | | |
| Sat 7 Huddersfield Town | | | | | | | | | | | | |
| Tues/Wed 10/11 (W'ron Cup 4th Rd) | | | | | | | | | | | | |
| Sat 14 Barnsley | | | | | | | | | | | | |
| Sat 21 Bolton Wanderers | | | | | | | | | | | | |
| Sat 28 Crewe Alexandra | | | | | | | | | | | | |

DECEMBER

| | | | | | | | | | | | | |
|--------------------------------|--|--|--|--|--|--|--|--|--|--|--|--|
| Wed 2 Queens Park Rangers | | | | | | | | | | | | |
| Sat 5 Birmingham City | | | | | | | | | | | | |
| Sat 12 Barnsley | | | | | | | | | | | | |
| Sun 20 Sheffield United | | | | | | | | | | | | |
| Sat 26 Portsmouth | | | | | | | | | | | | |
| Mon 28 Wolverhampton Wanderers | | | | | | | | | | | | |

JANUARY 1999

| | | | | | | | | | | | | |
|---|--|--|--|--|--|--|--|--|--|--|--|--|
| Sat 2 FA Cup Third Round | | | | | | | | | | | | |
| Sat 9 Grimsby Town | | | | | | | | | | | | |
| Sat 16 Sunderland | | | | | | | | | | | | |
| Sat 23 FA Cup Fourth Round | | | | | | | | | | | | |
| Wed 27 (W'ron Cup Semi-Final first leg) | | | | | | | | | | | | |
| Sat 30 Port Vale | | | | | | | | | | | | |

FEBRUARY

| | | | | | | | | | | | | |
|--|--|--|--|--|--|--|--|--|--|--|--|--|
| Sat 6 Bury | | | | | | | | | | | | |
| Sat 13 Bradford City (FA Cup 5th Rd) | | | | | | | | | | | | |
| Wed 17 (W'ron Cup Semi-Final second leg) | | | | | | | | | | | | |
| Sat 20 Oxford United | | | | | | | | | | | | |
| Sat 27 Bristol City | | | | | | | | | | | | |

MARCH

| | | | | | | | | | | | | |
|--|--|--|--|--|--|--|--|--|--|--|--|--|
| Tue 2 Watford | | | | | | | | | | | | |
| Sat 6 Tranmere Rovers (FA Cup Quarter-Final) | | | | | | | | | | | | |
| Tue 9 Crystal Palace | | | | | | | | | | | | |
| Sat 13 Huddersfield Town | | | | | | | | | | | | |
| Sat 20 West Bromwich Albion | | | | | | | | | | | | |
| Sun 21 Worthington Cup Final | | | | | | | | | | | | |
| Sat 27 Stockport County | | | | | | | | | | | | |

APRIL

| | | | | | | | | | | | | |
|---------------------------|--|--|--|--|--|--|--|--|--|--|--|--|
| Sat 3 Swinton Town | | | | | | | | | | | | |
| Mon 5 Queens Park Rangers | | | | | | | | | | | | |
| Sat 10 Norwich City | | | | | | | | | | | | |
| Sun 11 FA Cup Semi-Final | | | | | | | | | | | | |
| Sat 17 Bolton Wanderers | | | | | | | | | | | | |
| Sat 24 Crewe Alexandra | | | | | | | | | | | | |

MAY

| | | | | | | | | | | | | |
|------------------------|--|--|--|--|--|--|--|--|--|--|--|--|
| Sat 1 Birmingham City | | | | | | | | | | | | |
| Sun 5 Sheffield United | | | | | | | | | | | | |
| Sat 22 FA Cup Final | | | | | | | | | | | | |



**Kicked,
stretched,
strained,
sprained,
twisted,
cramped,
pulled,
gouged,
broken,
bruised,
battered,**

and still playing.

Thanks to the Ipswich Town Physio Centre, leading the way in expert physiotherapy and recovery.

From the highest performance sports injury to the simplest of domestic or work related complaints, **we can help you.**

Call us on: 01473 400500.

(Alternatively, call 0850 219211 outside office hours.)



IPSWICH TOWN PHYSIO CENTRE

Winning recovery for all.

Ipswich Town Football Club
Portman Road, Ipswich IP1 2DA

Key: Home games in blue, away in red, Worthington Cup games in green, FA Cup games in orange. Goalscorers in black.

Copyright the Football League Limited ©1998

Match Key:

Goalscorers shown in black
* first subbed player

** second subbed player
*** third subbed player
(90) time sub came on

o sent-off
p penalty
+ own goal

1998/99

11 12 13 14

Petta Mathie (56) Bracey Sonner (87)
 Petta Mathie (90) Bracey Holster Sonner (49) Bramble
 Petta Mathie (46) Holster Tanner
 Petta Naylor (90) Bracey Holster (51) Tanner Mason (76)
 Petta Naylor (70) Holster Tanner
 Petta Scowcroft (84) Holster (24) Tanner
 Petta Mathie (84) Holster (78) Sonner

 Petta Mathie (68) Holster Sonner (46)
 Petta Mathie Stockwell (46) Sonner (46)
 Petta Mathie Bracey Holster Sonner Tanner (66)
 Petta Mathie Holster (84) Sonner (63)
 Petta Mathie (103) Bracey Holster Sonner (105) Clapham (77)
 Petta Mathie (84) Clapham (75) Mowbray
 Petta Mathie Holster (80) Tanner (74)

 Petta Mathie (88) Tanner (77) Vernazza



Providing the musical entertainment prior to this afternoon's game with Swindon - and again at half-time - will be all-girl band **21st Century Girls**, who will be performing their current single 'Boyz R Toyz', which is available in all good record shops now.

Figures correct up to and including 14.10.98

Professional Staff 1998/99

| Name Born/Date | Height | Weight From | 1998/99 | | | | Total ITFC | | | | | | | |
|--------------------------|--------|--------------------|---------|----------|----------|-----|------------|----------|--------|----------|-------|----------|---|---|
| | | | Ige | apps/gls | cup/apps | gls | Ige | apps/gls | cup | apps/gls | p-off | apps/gls | | |
| Lee Bracey | 6'1" | 13st 7lb | | | | | | | | | | | | |
| Barking 11.09.68 | | Bury | 0 | 0 | 0 | 0 | 0 | 0 | 0 | 0 | 0 | 0 | 0 | 0 |
| Colin Stewart | 6'3" | 12st 7lb | | | | | | | | | | | | |
| Cleveland 10.01.80 | | Ipswich YT | 0 | 0 | 0 | 0 | 0 | 0 | 0 | 0 | 0 | 0 | 0 | 0 |
| Richard Wright | 6'2" | 13st | | | | | | | | | | | | |
| Ipswich 05.11.77 | | Ipswich YT | 11 | 0 | 4 | 0 | 123 | 0 | 27 | 0 | 4 | 0 | | |
| Wayne Brown | 6' | 12st 6lb | | | | | | | | | | | | |
| Barking 20.08.77 | | Ipswich YT | 0 | 0 | 0 | 0 | 1 | 0 | 0 | 0 | 0 | 0 | | |
| Jason Cundy | 6'1" | 13st 13lb | | | | | | | | | | | | |
| Wimbledon 12.11.69 | | Tottenham | 0 | 0 | 0 | 0 | 53 (1) | 5 | 12 | 0 | 2 | 0 | | |
| John Kennedy | 5'8" | 10st 5lb | | | | | | | | | | | | |
| Newmarket 19.08.78 | | Ipswich YT | 0 | 0 | 0 | 0 | 0 (1) | 0 | 0 | 0 | 0 | 0 | | |
| Tony Mowbray | 6'1" | 13st | | | | | | | | | | | | |
| Saltburn 22.11.63 | | Celtic | 6 | 0 | 2 | 0 | 56 (2) | 2 | 16 | 2 | 0 | 0 | | |
| Adam Tanner | 6' | 12st | | | | | | | | | | | | |
| Maldon 25.10.73 | | Ipswich YT | 5 (2) | 0 | 1 (1) | 0 | 41 (20) | 7 | 10 (4) | 1 | 0 | 0 | | |
| Mauricio Taricco | 5'9" | 11st 7lb | | | | | | | | | | | | |
| Buenos Aires 10.03.73 | | Argentinos Jun | 11 | 1 | 4 | 1 | 129 (3) | 4 | 29 | 3 | 4 | 0 | | |
| David Theobald | 6'2" | 11st 11lb | | | | | | | | | | | | |
| Cambridge 15.12.78 | | Ipswich YT | 0 | 0 | 0 | 0 | 0 | 0 | 0 | 0 | 0 | 0 | | |
| Manuel Thetis | 6'3" | 14st 13lb | | | | | | | | | | | | |
| France, 05.11.71 | | Seville, Spa | 5 | 0 | 2 | 1 | 5 | 0 | 2 | 1 | 0 | 0 | | |
| Mark Venus | 6' | 12st 9lb | | | | | | | | | | | | |
| Hartlepool 06.04.67 | | Wolves | 10 | 2 | 4 | 0 | 22 (2) | 3 | 10 | 1 | 2 | 0 | | |
| Terry Bowes | 5'10" | 11st | | | | | | | | | | | | |
| London 13.09.79 | | Arsenal | 0 | 0 | 0 | 0 | 0 | 0 | 0 | 0 | 0 | 0 | | |
| Jamie Clapham | 5'9" | 10st 11lb | | | | | | | | | | | | |
| Lincoln 07.12.75 | | Tottenham | 10 (1) | 0 | 3 (1) | 0 | 32 (1) | 0 | 3 (1) | 0 | 1 | 0 | | |
| Kieron Dyer | 5'7" | 9st 7lb | | | | | | | | | | | | |
| Ipswich 29.12.78 | | Ipswich YT | 11 | 1 | 4 | 0 | 54 (11) | 5 | 14 | 1 | 3 (1) | 0 | | |
| Matt Holland | 5'8" | 11st 12lb | | | | | | | | | | | | |
| Bury 11.04.74 | | Bournemouth | 11 | 1 | 4 | 2 | 57 | 11 | 15 | 4 | 2 | 0 | | |
| Marco Holster | 5'7" | 10st 11lb | | | | | | | | | | | | |
| Wees, Holland 04.12.71 | | Heracles, Holland | 1 (4) | 0 | 0 | 0 | 1 (4) | 0 | 0 | 0 | 0 | 0 | | |
| Chris Keeble | 5'10" | 10st 4lb | | | | | | | | | | | | |
| Colchester 07.09.78 | | Ipswich YT | 0 | 0 | 0 | 0 | 0 (1) | 0 | 0 | 0 | 0 | 0 | | |
| Stuart Niven | 5'11" | 12st 8lb | | | | | | | | | | | | |
| Glasgow 24.12.78 | | Ipswich YT | 0 | 0 | 0 | 0 | 2 | 0 | 0 | 0 | 0 | 0 | | |
| Bobby Petta | 5'7" | 11st 3lb | | | | | | | | | | | | |
| Rotterdam 06.08.74 | | Feyenoord, Holland | 11 | 0 | 4 | 0 | 40 (9) | 7 | 11 (3) | 0 | 2 | 0 | | |
| Danny Sonner | 5'11" | 12st 8lb | | | | | | | | | | | | |
| Wigan 09.01.72 | | Preussen Kohn, Ger | 0 (4) | 0 | 0 (2) | 0 | 28 (27) | 3 | 7 (5) | 1 | 0 (1) | 0 | | |
| Mick Stockwell | 5'9" | 11st 4lb | | | | | | | | | | | | |
| Chelmsford 14.02.65 | | Ipswich YT | 8 (1) | 0 | 4 | 1 | 428 (22) | 31 | 84 (9) | 8 | 4 | 1 | | |
| Sean Friars | 5'8" | 10st 7lb | | | | | | | | | | | | |
| Derry 15.05.79 | | Liverpool | 0 | 0 | 0 | 0 | 0 | 0 | 0 | 0 | 0 | 0 | | |
| David Johnson | 5'6" | 12st 5lb | | | | | | | | | | | | |
| Jamaica 15.08.76 | | Bury | 11 | 5 | 4 | 1 | 41 (1) | 23 | 8 | 3 | 2 | 0 | | |
| Alex Mathie | 5'10" | 10st 7lb | | | | | | | | | | | | |
| Bathgate 20.12.68 | | Newcastle Utd | 2 (6) | 1 | 1 (2) | 1 | 90 (19) | 38 | 15 (6) | 9 | 2 | 0 | | |
| Neil Midgley | 5'11" | 11st 2lb | | | | | | | | | | | | |
| Cambridge 21.10.78 | | Ipswich YT | 0 | 0 | 0 | 0 | 0 | 0 | 0 | 0 | 0 | 0 | | |
| Richard Naylor | 6'1" | 13st 7lb | | | | | | | | | | | | |
| Leeds 28.02.77 | | Ipswich YT | 1 | 0 | 1 | 0 | 20 (13) | 6 | 2 (4) | 1 | 0 | 0 | | |
| James Scowcroft | 6'1" | 12st 2lb | | | | | | | | | | | | |
| Bury St.Edmunds 15.11.75 | | Ipswich YT | 8 (1) | 6 | 2 | 1 | 79 (24) | 21 | 21 (3) | 3 | 2 (1) | 1 | | |

Nationwide Division ONE 1998/99

| | P | W | D | L | F | A | Pts |
|--------------|----|---|---|---|----|----|-----|
| Huddersfield | 13 | 7 | 2 | 4 | 18 | 17 | 23 |
| Sunderland | 11 | 5 | 6 | 0 | 25 | 7 | 21 |
| Birmingham | 13 | 6 | 3 | 4 | 16 | 12 | 21 |
| Bolton | 10 | 5 | 5 | 0 | 25 | 16 | 20 |
| Watford | 12 | 6 | 2 | 4 | 18 | 18 | 20 |
| Ipswich | 11 | 5 | 4 | 2 | 17 | 7 | 19 |
| Bradford | 12 | 5 | 3 | 4 | 19 | 14 | 18 |
| Sheff Utd | 12 | 5 | 3 | 4 | 18 | 19 | 18 |
| Wolves | 11 | 5 | 3 | 3 | 14 | 9 | 18 |
| West Brom | 11 | 5 | 2 | 4 | 23 | 20 | 17 |
| Norwich | 10 | 5 | 2 | 3 | 16 | 11 | 17 |
| Grimsby | 12 | 4 | 4 | 4 | 15 | 14 | 16 |
| Bury | 13 | 4 | 4 | 5 | 9 | 11 | 16 |
| Stockport | 12 | 3 | 6 | 3 | 15 | 17 | 15 |
| Portsmouth | 13 | 3 | 5 | 5 | 20 | 19 | 14 |
| Barnsley | 12 | 3 | 5 | 4 | 16 | 17 | 14 |
| Crystal P | 10 | 4 | 2 | 4 | 12 | 16 | 14 |
| Port Vale | 12 | 4 | 2 | 6 | 10 | 20 | 14 |
| Bristol C | 13 | 2 | 6 | 5 | 20 | 25 | 12 |
| Swindon | 13 | 3 | 3 | 7 | 19 | 25 | 12 |
| Oxford | 13 | 3 | 3 | 7 | 17 | 26 | 12 |
| Crewe | 11 | 2 | 4 | 5 | 15 | 20 | 10 |
| QPR | 11 | 2 | 3 | 6 | 10 | 18 | 9 |
| Tranmere | 11 | 1 | 6 | 4 | 8 | 17 | 9 |

Leading Scorers 1998/99



| | League | WC | FA Cup |
|------------------|--------|----|--------|
| James Scowcroft | 6 | 1 | - |
| DAVID JOHNSON | 5 | 1 | - |
| Matt Holland | 1 | 2 | - |
| Alex Mathie | 1 | 1 | - |
| Mauricio Taricco | 1 | 1 | - |
| Mark Venus | 2 | - | - |
| Kieron Dyer | 1 | - | - |
| Mick Stockwell | - | 1 | - |
| Manuel Thetis | - | 1 | - |

the teams



IPSWICH TOWN

- 1 Richard Wright
- 2 Mick Stockwell
- 3 Mauricio Taricco
- 4 Jamie Clapham
- 5 Tony Mowbray
- 6 Mark Venus
- 7 Kieron Dyer
- 8 Matt Holland
- 9 David Johnson
- 10 James Scowcroft
- 11 Bobby Petta
- 12
- 13
- 14

Other Squad Members include: Lee Bracey, Colin Stewart, Wayne Brown, Jason Cundy, John Kennedy, David Theobald, Chris Keeble, Stuart Niven, Adam Tanner, Terry Bowes, Marco Holster, Richard Naylor, Neil Midgley, Alex Mathie, Sean Friars, Manuel Thetis, Paolo Vernazza



SWINDON TOWN

- 1 Frank Talia
- 2 Mark Robinson
- 3 Gareth Hall
- 4 Scott Leitch
- 5 Alan Reeves
- 6 Brian Borrows
- 7 Mark Walters
- 8 George Ndah
- 9 Iffy Onuora
- 10 Darren Bullock
- 11 Ty Gooden
- 12
- 13
- 14

Other Squad Members include: Jimmy Glass, Sol Davis, David Kerslake, Alan McDonald, Craig Taylor, Adam Willis, Philippe Cuervo, Stephen Howe, Kevin Watson, Steve Gowe, Chris Hay, Steve Mildenhall, Lee Collins, Robin Hulbert

Mitre Matchball Sponsor

BE ON THE BALL
saxon
TRAINING LIMITED

ISO 9001
HADDLEIGH ROAD INDUSTRIAL ESTATE, HADDLEIGH ROAD, HADDLEIGH, SUFFOLK IP7 5PW
TELEPHONE: 01473 822415 FAX: 01473 822416
E-MAIL: info@saxontraining.co.uk

Trainers' bench sponsor
INTATRavel
CRUISE THE CARIBBEAN
7NTS FROM ONLY **£899**
Full Board
Visiting St. Maarten, St. John, St. Thomas and the Bahamas
to book call Intatravel Direct on
01279 453600
Offer applies to new booking only.
Subject to availability and terms & conditions

Windows Glass and
Doors Doors and
Conservatories Conservatories Glazing

HADLEIGH GLASS
Telephone
01473 822415
Suppliers to
Ipswich Town Football Club
6 Pond Hall Road, Hadleigh, Suffolk IP7 5PW

Match Officials
Referee
Mr John Brandwood
Lichfield, Staffs

Assistants
Mr. N.F. Perkin
and
Mr. T.J. Pollard

Reserve Official
Mr. F. Graham

All the news on
THE BLUES.

Final Whistle contains 16 pages of local and national sport every Monday.

Evening Star
Lively, loyal, local.